

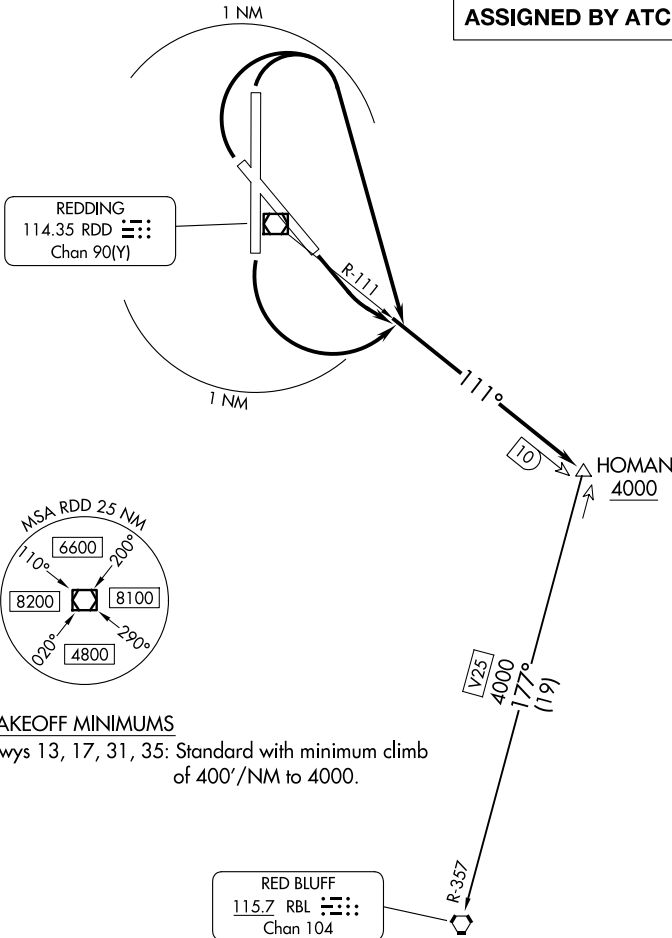
(HOMAN4.HOMAN) 26134
HOMAN FOUR DEPARTURE

AL-688 (FAA)

REDDING RGNL (RDD)
 REDDING, CALIFORNIA

**TOP ALTITUDE:
 ASSIGNED BY ATC**

OAKLAND CENTER
 132.2 350.3
 ATIS
 124.1
 GND CON
 121.7
 REDDING TOWER ★
 119.8 269.25



TAKEOFF MINIMUMS

Rwys 13, 17, 31, 35: Standard with minimum climb of 400'/NM to 4000.

NOTE: Chart not to scale.

DEPARTURE ROUTE DESCRIPTION

TAKEOFF RUNWAYS 13, 17: Climbing left turn within 1 NM, thence. . .

TAKEOFF RUNWAYS 31, 35: Climbing right turn within 1 NM, thence. . .

. . . Intercept the RDD R-111 to HOMAN INT/RDD 10 DME, cross HOMAN INT/RDD 10 DME at or above 4000, then on transition. Maintain ATC assigned altitude, expect filed altitude 10 minutes after departure.

RED BLUFF TRANSITION (HOMAN4.RBL): From over HOMAN on RBL R-357 to RBL VORTAC.