

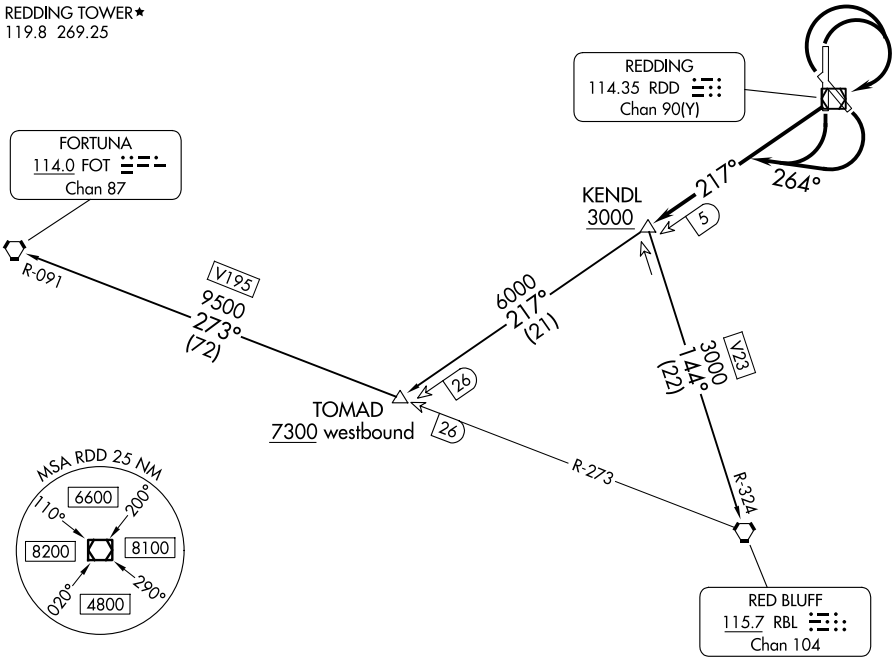
(KENDL5.KENDL) 26134
KENDL FIVE DEPARTURE

AL-688 (FAA)

REDDING RGNL (R.DD)
 REDDING, CALIFORNIA

OAKLAND CENTER
 132.2 350.3
 ATIS
 124.1
 GND CON
 121.7
 REDDING TOWER★
 119.8 269.25

**TOP ALTITUDE:
 ASSIGNED BY ATC**



TAKEOFF MINIMUMS

- Rwy 13: Standard with minimum climb of 410'/NM to 3000.
- Rwy 17: Standard with minimum climb of 495'/NM to 3000.
- Rwy 31: Standard with minimum climb of 440'/NM to 3000.
- Rwy 35: Standard with minimum climb of 410'/NM to 3000.

NOTE: Chart not to scale.

DEPARTURE ROUTE DESCRIPTION

TAKEOFF RUNWAYS 13, 17: Climbing right turn heading 264° to intercept RDD VOR/DME R-217 to KENDL INT/RDD 5 DME, thence . . .

TAKEOFF RUNWAYS 31, 35: Climbing right turn direct RDD VOR/DME, then on RDD VOR/DME R-217 to KENDL INT/RDD 5 DME, thence . . .

. . . then to cross KENDL INT/RDD 5 DME at or above 3000, then on transition. Maintain ATC assigned altitude, expect filed altitude 10 minutes after departure.

FORTUNA TRANSITION (KENDL5.FOT): From over KENDL on RDD R-217 to TOMAD, then on RBL R-273 and FOT R-091 to FOT VORTAC.

RED BLUFF TRANSITION (KENDL5.RBL): From over KENDL on RBL R-324 to RBL VORTAC.