

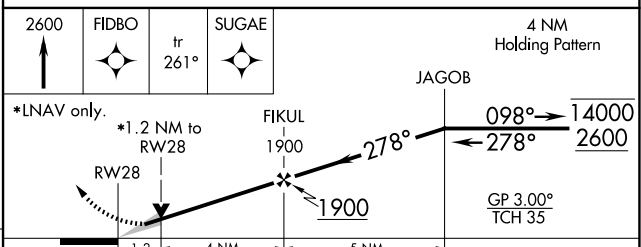
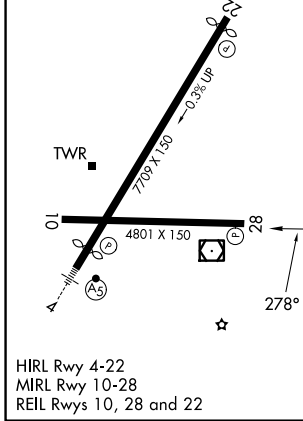
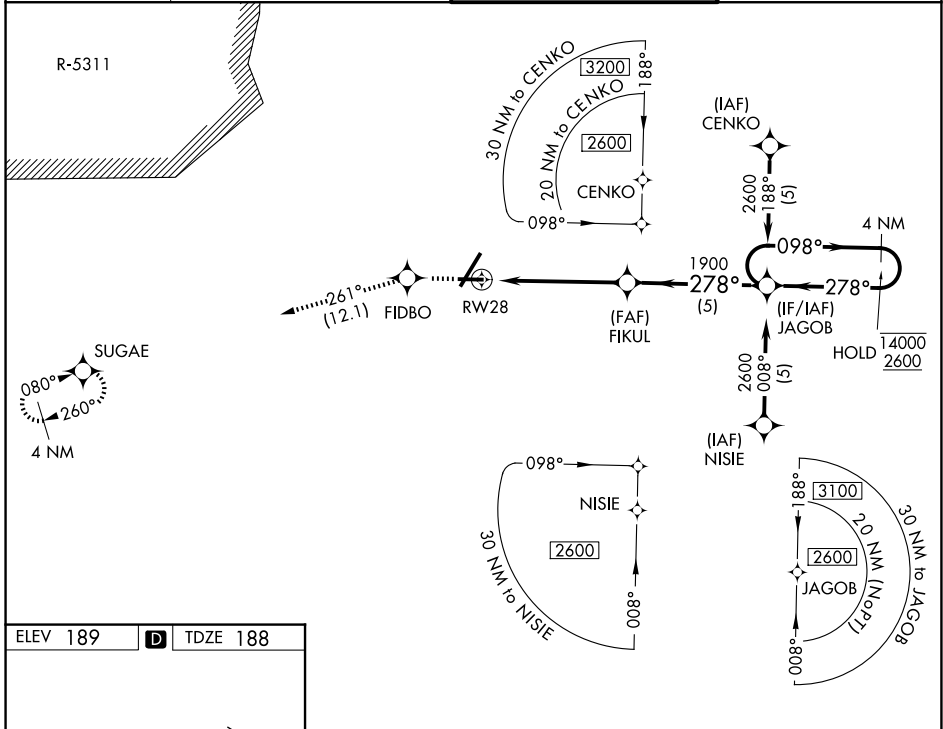
APP CRS	Rwy Ldg	<b>4801</b>
<b>278°</b>	TDZE	<b>188</b>
	Apt Elev	<b>189</b>

# RNAV (GPS) RWY 28

FAYETTEVILLE RGNL/GRANNIS FLD (FAY)

RNP APCH.	MISSED APPROACH: Climb to 2600 direct FIDBO and on 261° track to SUGAE and hold.
<b>⚠</b>	For uncompensated Baro-VNAV systems, LNAV/VNAV NA below -10° C or above 54°C.

ATIS <b>121.25</b>	FAYETTEVILLE APP CON <b>133.0 290.25</b>	FAYETTEVILLE TOWER <b>118.3 269.2</b>	GND CON <b>121.7 348.6</b>
-----------------------	---	--	-------------------------------



CATEGORY	A	B	C	D
LNAV/VNAV	DA	500-1¼		312 (400-1¼)
LNAV MDA	600-1	412 (500-1)	600-1¼	412 (500-1¼)
CIRCLING	640-1¼ 451 (500-1¼)	660-1¼ 471 (500-1¼)	860-2 671 (700-2)	860-2¼ 671 (700-2¼)

SE-2, 11 JUN 2026 to 09 JUL 2026

SE-2, 11 JUN 2026 to 09 JUL 2026