

VOR/DME <b>FAY</b> <b>114.85</b> Chan <b>95(Y)</b>	APP CRS <b>198°</b>	Rwy Ldg <b>6408</b> TDZE <b>180</b> Apt Elev <b>189</b>
--	------------------------	---

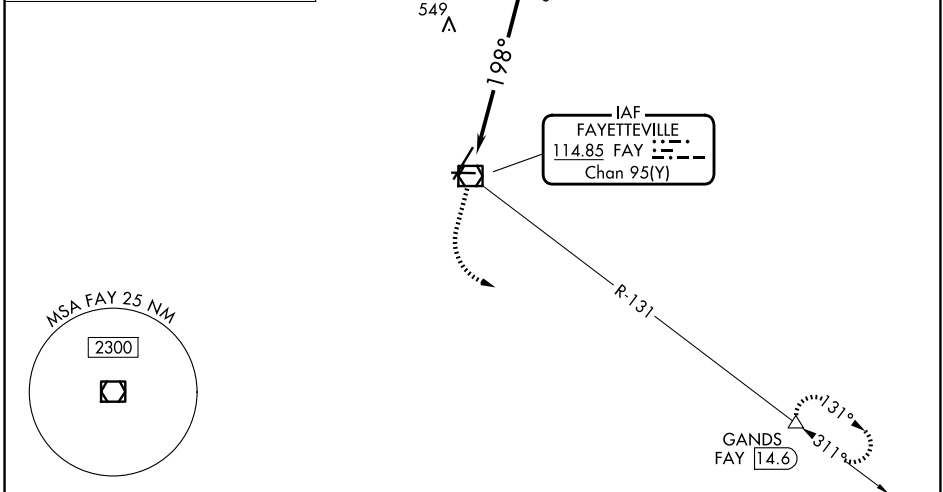
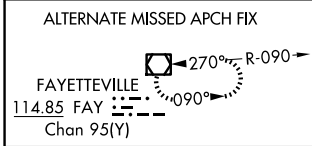
# VOR RWY 22

FAYETTEVILLE RGNL/GRANNIS FLD (FAY)

DME required.

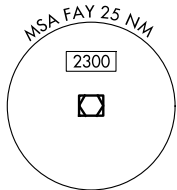
**MISSED APPROACH:** Climb to 1300 then climbing left turn to 3000 on heading 100° and on FAY VOR/DME R-131 to GANDS/FAY 14.6 DME and hold.

ATIS <b>121.25</b>	FAYETTEVILLE APP CON <b>133.0 290.25</b>	FAYETTEVILLE TOWER <b>118.3 269.2</b>	GND CON <b>121.7 348.6</b>
-----------------------	---	--	-------------------------------

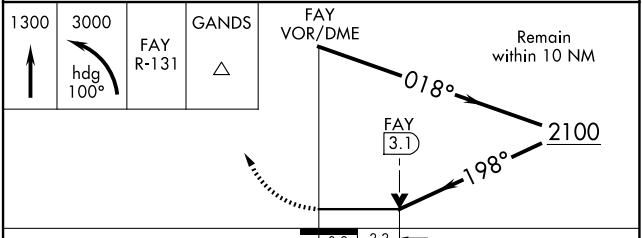
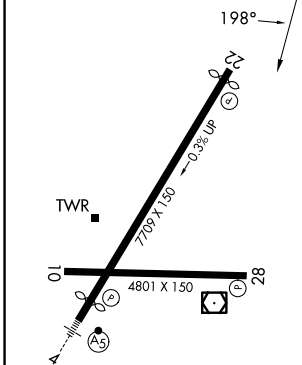


SE-2, 11 JUN 2026 to 09 JUL 2026

SE-2, 11 JUN 2026 to 09 JUL 2026



ELEV <b>189</b>	<b>D</b>	TDZE <b>180</b>
-----------------	----------	-----------------



HIRL Rwy 4-22  
MIRL Rwy 10-28  
REIL Rwy 10, 28 and 22

CATEGORY	A	B	C	D
S-22	900-1 720 (800-1)		900-2 720 (800-2)	
CIRCLING	900-1 711 (800-1)		900-2 711 (800-2)	900-2 711 (800-2 1/4)