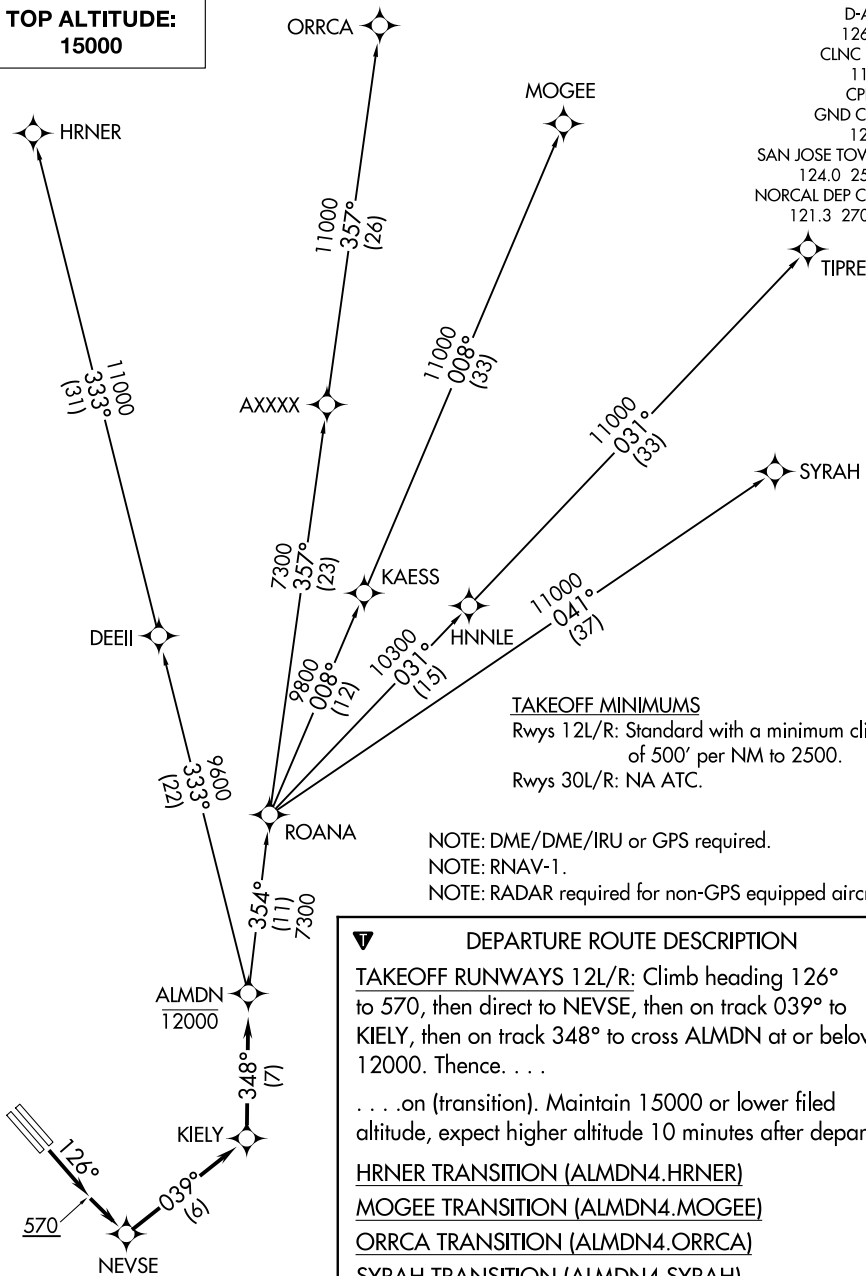


# ALMDN FOUR DEPARTURE (RNAV)

**TOP ALTITUDE:  
15000**

D-ATIS  
126.95  
CLNC DEL  
118.0  
CPDLC  
GND CON  
121.7  
SAN JOSE TOWER \*  
124.0 257.6  
NORCAL DEP CON  
121.3 270.35



**TAKEOFF MINIMUMS**

Rwys 12L/R: Standard with a minimum climb of 500' per NM to 2500.  
Rwys 30L/R: NA ATC.

NOTE: DME/DME/IRU or GPS required.  
NOTE: RNAV-1.  
NOTE: RADAR required for non-GPS equipped aircraft.

NOTE: Chart not to scale.

SW-2, 11 JUN 2026 to 09 JUL 2026

SW-2, 11 JUN 2026 to 09 JUL 2026

# ALMDN FOUR DEPARTURE (RNAV)