

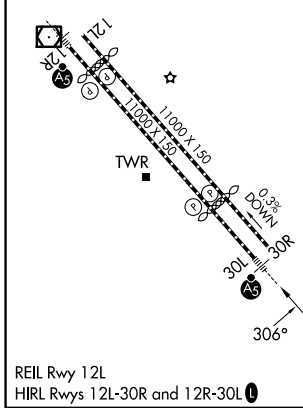
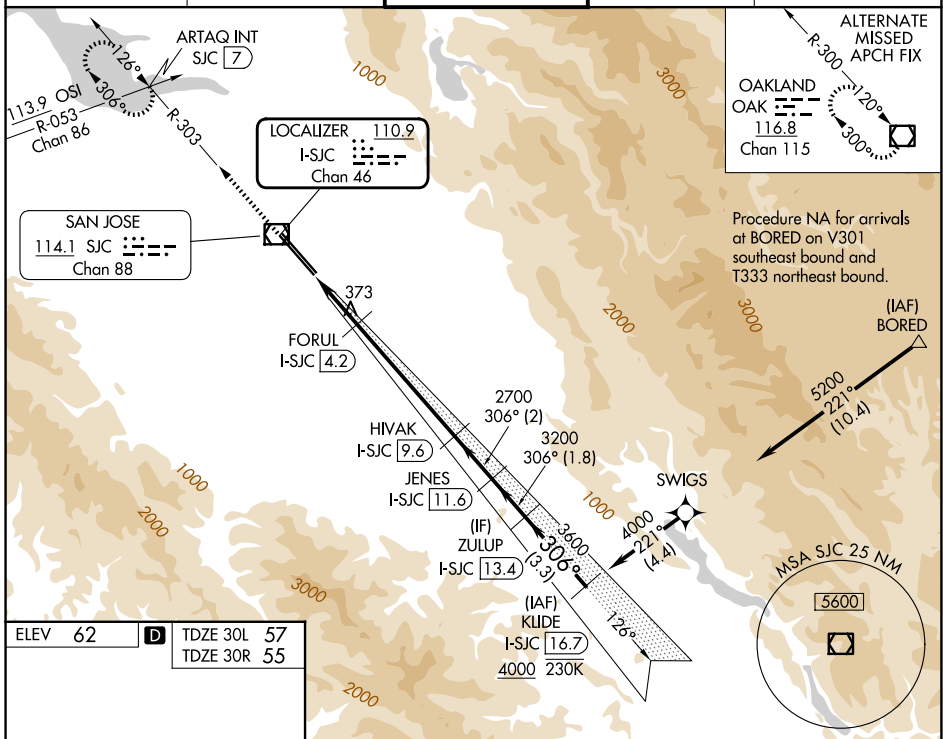
LOC/DME I-SJC <b>110.9</b> Chan <b>46</b>	APP CRS <b>306°</b>	Rwy Ldg <b>7614</b>	30L <b>7597</b>	30R <b>55</b>
		TDZE <b>57</b>	<b>55</b>	
		Apt Elev <b>62</b>	<b>62</b>	

# ILS or LOC RWY 30L

NORMAN Y MINETA SAN JOSE INTL (SJC)

RNAV 1-GPS or RADAR required for procedure entry. DME required. From BORED: RNAV 1-GPS required.	MALSR Rwy 30L 	MISSED APPROACH: Climb to 1900 on SJC VOR/DME R-303 to ARTAQ INT/SJC 7 DME and hold.
 # RVR 1800 authorized with use of FD or AP or HUD to DA.		

D-ATIS <b>126.95</b>	NORCAL APP CON <b>120.1 290.25</b>	SAN JOSE TOWER ★ <b>124.0 (CTAF) 257.6</b>	GND CON <b>121.7</b>	UNICOM <b>122.95</b>
-------------------------	---------------------------------------	---	-------------------------	-------------------------



ELEV 62	TDZE 30L 57	TDZE 30R 55		
1900	ARTAQ INT	VGSJ and ILS glidepath not coincident (VGSJ Angle 3.00/TCH 70).		
SJC R-303	FORUL I-SJC 4.2	JENES I-SJC 11.6		
*LOC only	*I-SJC 3	ZULUP I-SJC 13.4		
I-SJC 1.4	I-SJC 4.2	HIAK I-SJC 9.6		
		SWIGS 4000 221 (4.4)		
		KLIDE I-SJC 16.7		
		4000		
		3200		
		3600		
		GS 3.00° TCH 54		
CATEGORY	A	B	C	D
S-ILS 30L#	257/24 200 (200-1/2)			
S-LOC 30L	640/24	583 (600-1/2)	640-1 3/4	583 (600-1 1/4)
SIDESTEP 30R	640-1	585 (600-1)	640-1 3/4	585 (600-2)