

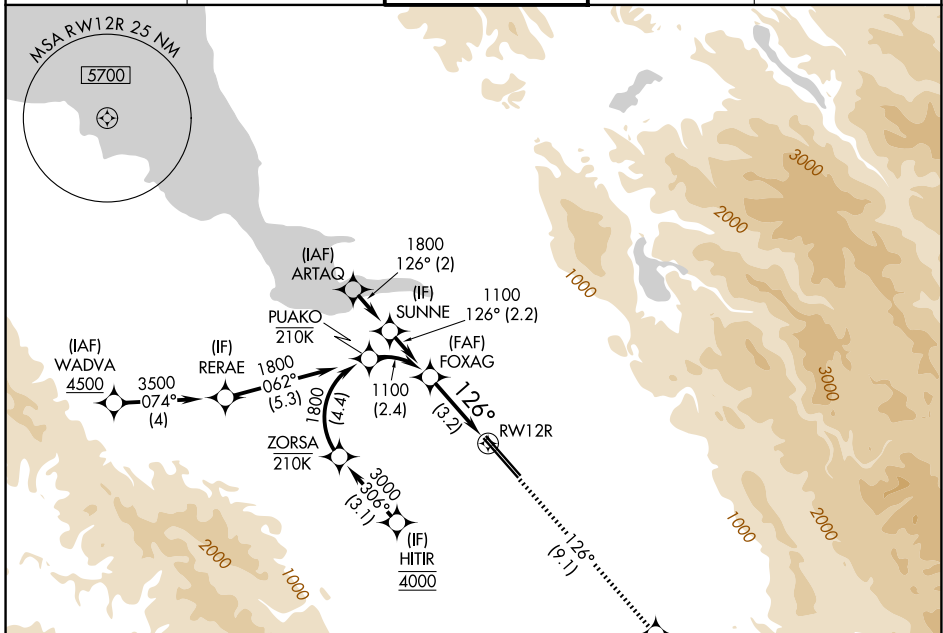
APP CRS	Rwy Ldg	8587
126°	TDZE	46
	Apt Elev	62

RNAV (RNP) Z RWY 12R

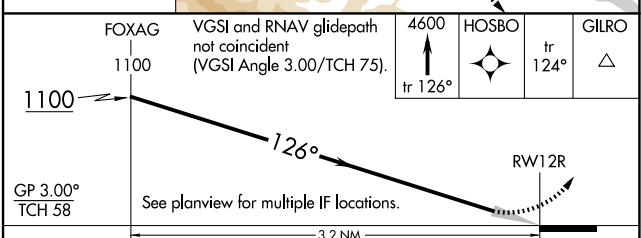
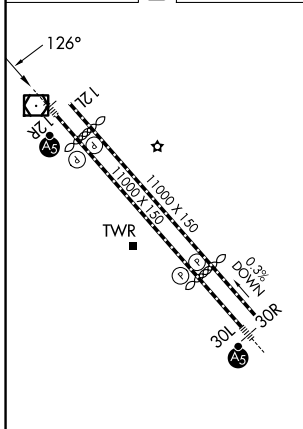
NORMAN Y MINETA SAN JOSE INTL (SJC)

RNP AR APCH-GPS.	MALSRL	MISSED APPROACH: Climb to 4600 on track 126° to HOSBO and track 124° to GILRO and hold.
▼ For uncompensated Baro-VNAV systems, procedure NA below 0°C or above 54°C. For inop ALS, increase RNP 0.15 all Cats visibility to RVR 5500.		

D-ATIS 126.95	NORCAL APP CON 120.1 290.25	SAN JOSE TOWER * 124.0 (CTAF) 0 257.6	GND CON 121.7	UNICOM 122.95
-------------------------	---------------------------------------	---	-------------------------	-------------------------



ELEV	62	D	TDZE	46
------	-----------	----------	------	-----------



CATEGORY	A	B	C	D
RNP 0.15 DA		394/30	348 (400- ³ / ₄)	
RNP 0.30 DA		486/40	440 (500- ³ / ₄)	

REIL Rwy 12L
HIRL Rwys 12L-30R and 12R-30L

AUTHORIZATION REQUIRED