

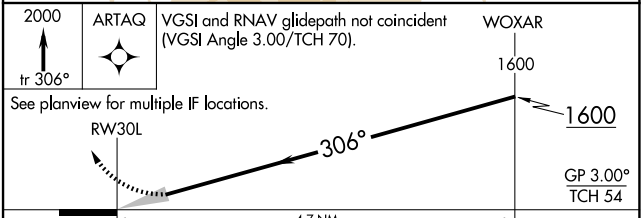
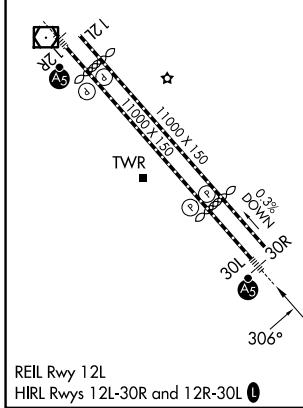
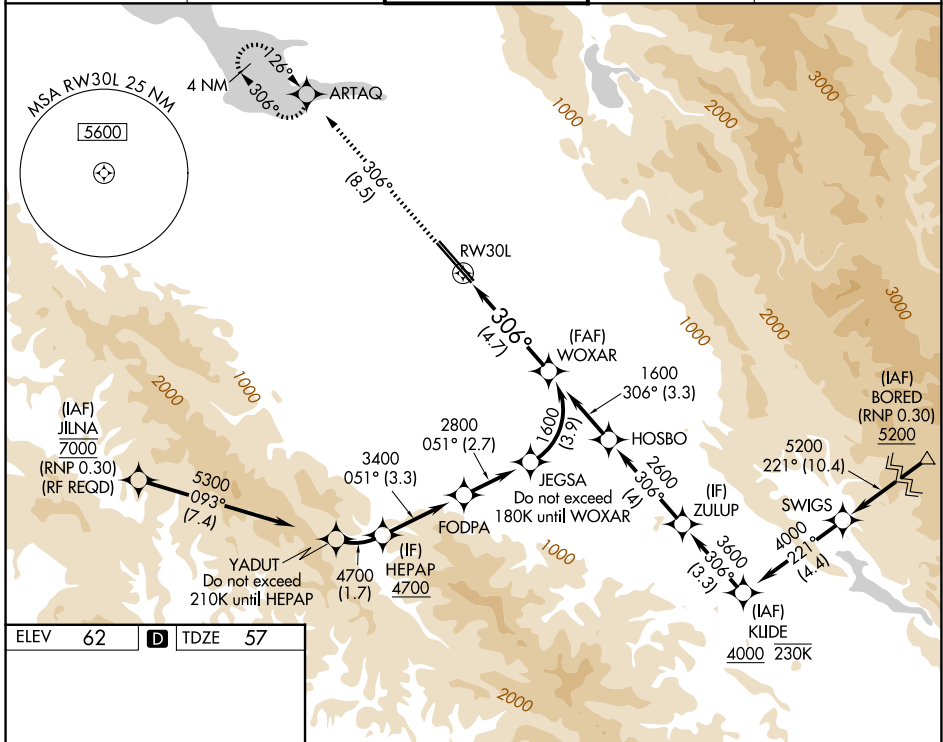
APP CRS	Rwy Ldg	<b>7614</b>
<b>306°</b>	TDZE	<b>57</b>
	Apt Elev	<b>62</b>

# RNAV (RNP) Z RWY 30L

NORMAN Y MINETA SAN JOSE INTL (SJC)

RNP AR APCH.	MALSR	MISSED APPROACH: Climb to 2000 on track 306° to ARTAQ and hold.
▼ For uncompensated Baro-VNAV systems, procedure NA below 1°C or above 54°C. For inop ALS, increase RNP 0.10 all Cats visibility to RVR 5500 and increase RNP 0.30 all Cats visibility to 1½ SM.		

D-ATIS <b>126.95</b>	NORCAL APP CON <b>120.1 290.25</b>	SAN JOSE TOWER * <b>124.0 (CTAF) 0 257.6</b>	GND CON <b>121.7</b>	UNICOM <b>122.95</b>
-------------------------	---------------------------------------	---	-------------------------	-------------------------



CATEGORY	A	B	C	D
RNP 0.10 DA		430/35	373 (400-5%)	
RNP 0.20 DA		464/40	407 (500-3%)	
RNP 0.30 DA		541/50	484 (500-1)	

## AUTHORIZATION REQUIRED

SW-2, 11 JUN 2026 to 09 JUL 2026

SW-2, 11 JUN 2026 to 09 JUL 2026