

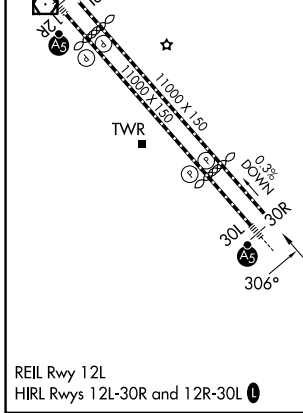
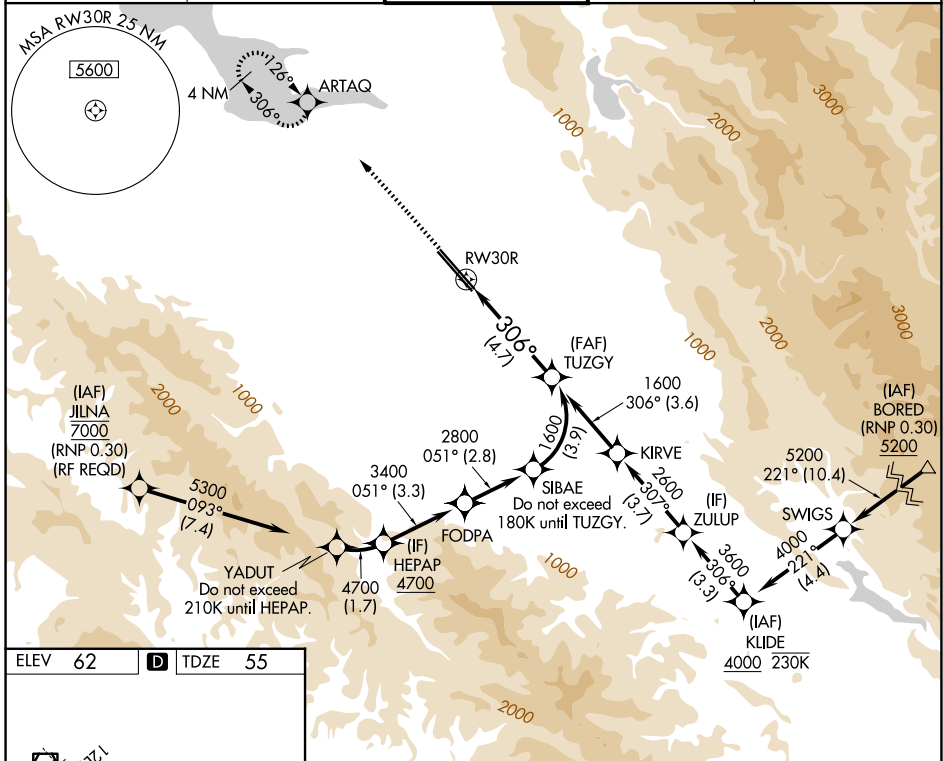
APP CRS	Rwy Ldg	7597
306°	TDZE	55
	Apt Elev	62

RNAV (RNP) Z RWY 30R

NORMAN Y MINETA SAN JOSE INTL (SJC)

RNP AR APCH.	MISSED APPROACH: Climb to 600 then climb to 2000 direct ARTAQ and hold.
▼ For uncompensated Baro-VNAV systems, procedure NA below 1°C or above 54°C.	

D-ATIS 126.95	NORCAL APP CON 120.1 290.25	SAN JOSE TOWER ★ 124.0 (CTAF) 257.6	GND CON 121.7	UNICOM 122.95
-------------------------	---------------------------------------	---	-------------------------	-------------------------



ELEV 62	D TDZE 55			
600	2000	ARTAQ	VGSI and RNAV glidepath not coincident (VGSI Angle 3.00/TCH 69°).	TUZGY
↑	↑	✧		1600
See planview for multiple IF locations.				
RW30R	4.7 NM			1600
				GP 3.00° TCH 55

CATEGORY	A	B	C	D
RNP 0.11 DA		377-1	322 (400-1)	
RNP 0.20 DA		472-1½	417 (500-1½)	
RNP 0.30 DA		538-1¾	483 (500-1¾)	

AUTHORIZATION REQUIRED