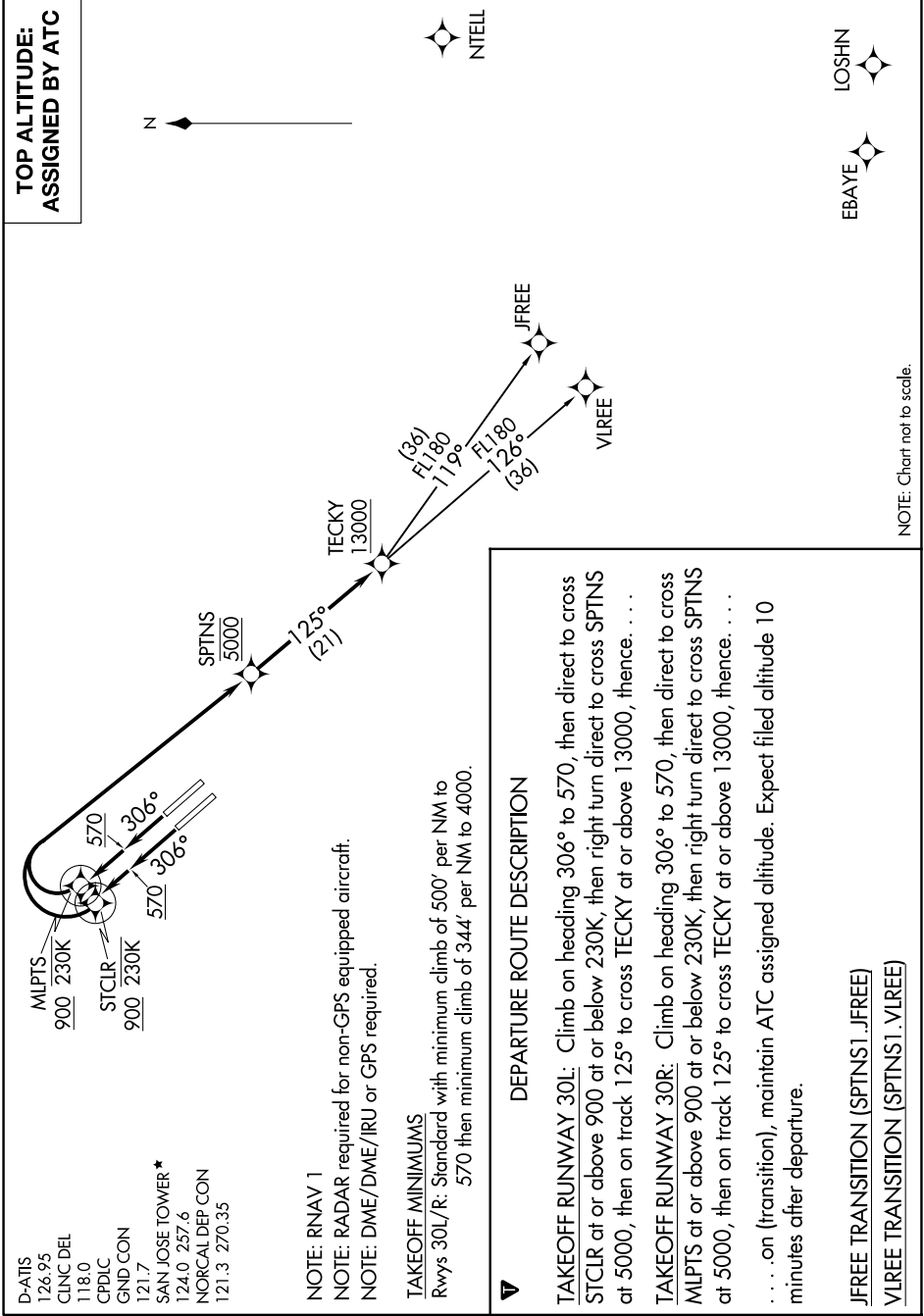


SW-2, 11 JUN 2026 to 09 JUL 2026



D-ATIS 126.95
 CLNC DEL 118.0
 CPDLC
 GND CON 121.7
 SAN JOSE TOWER * 124.0 257.6
 NORCAL DEP CON 121.3 270.35

NOTE: RNAV 1
NOTE: RADAR required for non-GPS equipped aircraft.
NOTE: DME/DME/IRU or GPS required.

TAKEOFF MINIMUMS
 Rwys 30L/R: Standard with minimum climb of 500' per NM to 570 then minimum climb of 344' per NM to 4000.

NOTE: Chart not to scale.

SW-2, 11 JUN 2026 to 09 JUL 2026