

WAAS CH 90201 W22A	APP CRS 226°	Rwy Ldg TDZE Apt Elev	7004 980 980
--	------------------------	-----------------------------	---

RNAV (GPS) RWY 22

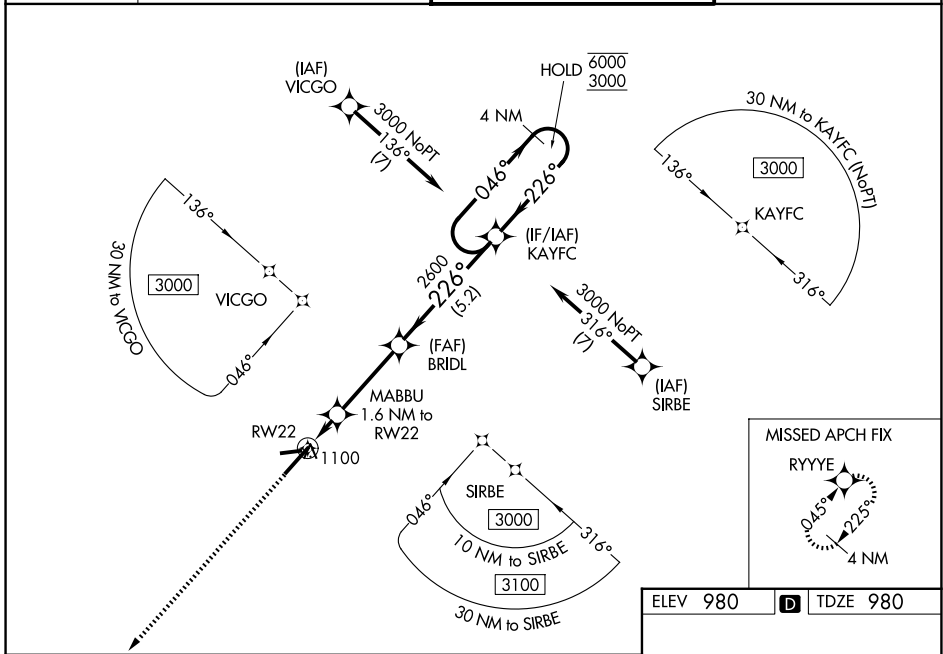
BLUE GRASS (LEX)

RNP APCH - GPS.

⚠ For uncompensated Baro-VNAV systems, LNAV/VNAV NA below -16°C or above 54°C. Baro-VNAV and VDP NA when using FFT altimeter setting. When local altimeter setting not received, use FFT altimeter setting and increase LPV DA to 1242 feet and all visibilities 1/8 SM. Increase LNAV/VNAV DA to 1333 feet and all visibilities 1/8 SM. Increase all MDAs 80 feet and LNAV visibility Cat C/D 3/8 SM, and Circling visibility Cat C/D 1/4 SM.

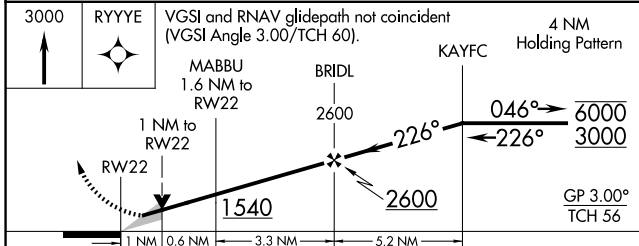
MISSED APPROACH: Climb to 3000 direct RYYYY and hold.

ATIS 126.3	LEXINGTON APP CON 120.15 259.3 (040°-220°) 120.75 298.9 (221°-039°)	LEXINGTON TOWER 119.1 257.8	GND CON 121.9
----------------------	---	---------------------------------------	-------------------------

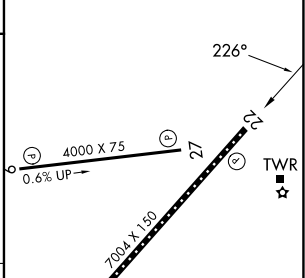


SE-1, 11 JUN 2026 to 09 JUL 2026

SE-1, 11 JUN 2026 to 09 JUL 2026



ELEV 980	D TDZE 980
----------	-------------------



CATEGORY	A	B	C	D
LPV DA		1180-3/4	200 (200-3/4)	
LNAV/VNAV DA		1271-7/8	291 (300-7/8)	
LNAV MDA		1360-1	380 (400-1)	
CIRCLING	1440-1	460 (500-1)	1520-1 1/2 540 (600-1 1/2)	1600-2 620 (700-2)

TDZL/RCLS Rwy 4
REIL Rws 9, 22 and 27
HIRL Rwy 4-22
MIRL Rwy 9-27