

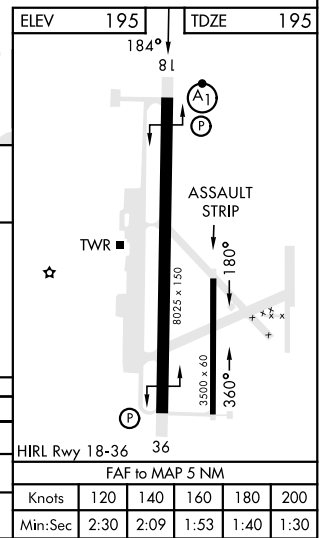
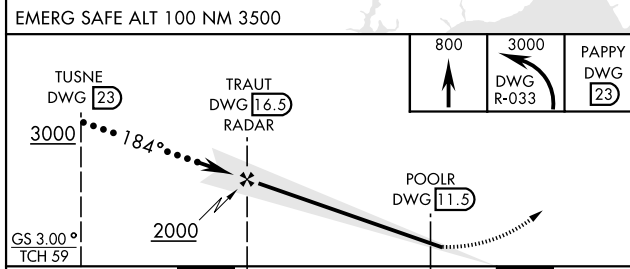
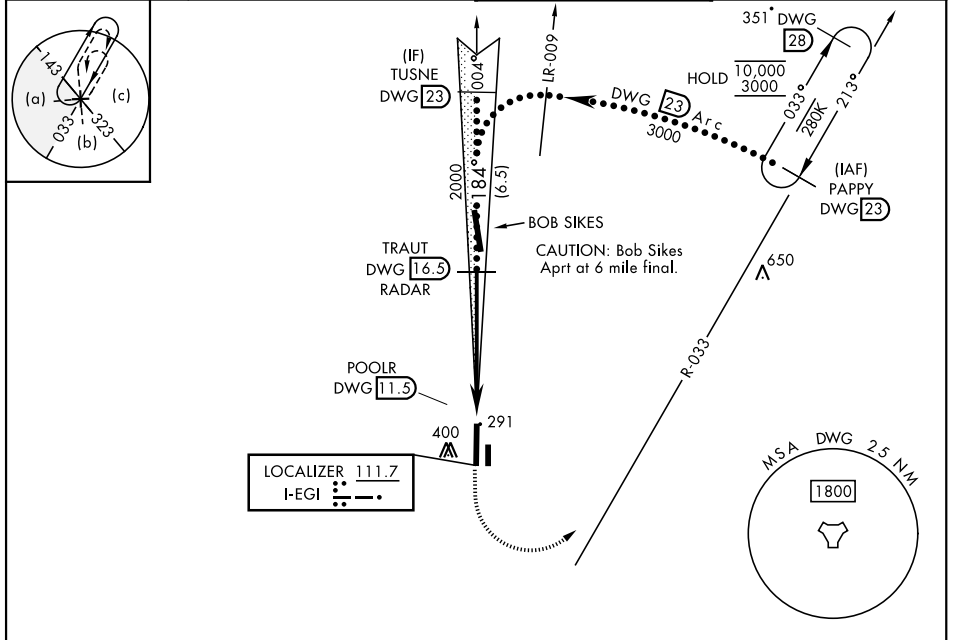
# HI-ILS or LOC Y RWY 18


LOC I-EGI <b>111.7</b>	APCH CRS <b>184°</b>	Rwy Idg TDZE Arprt Elev <b>8025</b> <b>195</b> <b>195</b>	[USAF]	DUKE FLD (EGLIN AF AUX NR 3)	(KEGI)
---------------------------	-------------------------	--	--------	------------------------------	--------

\* When ALS inop, increase RVR to 40, vis to ¾ mile.  
 \*\* When ALS inop, increase RVR to 55, vis to 1 mile.

ALSF-1  MISSED APPROACH: Climb to 800, then climbing left turn to 3000 on heading 078° and DWG TACAN R-033 to PAPPY (DWG R-033/23 DME) and hold.

ATIS ★ <b>244.575</b>	EGLIN APP CON <b>125.1 281.45</b> (271° - 089°) <b>132.1 360.6</b> (090° - 270°)	TOWER ★ <b>133.2 290.425</b>	GND CON <b>123.25 251.125</b>
--------------------------	--	---------------------------------	----------------------------------



CATEGORY	C	D	E
S-ILS 18 *	395/24	200	(200-½)
S-LOC 18 **	540/30	345	(400-¾)
 CIRCLING	740-1½ 545 (600-1½)	760-2 565 (600-2)	820-2¼ 625 (700-2¼)

HIRL Rwy 18-36 36					
FAF to MAP 5 NM					
Knots	120	140	160	180	200
Min:Sec	2:30	2:09	1:53	1:40	1:30

# HI-ILS or LOC Y RWY 18

SE-3, 11 JUN 2026 to 09 JUL 2026

SE-3, 11 JUN 2026 to 09 JUL 2026