

ILS or LOC Z RWY 18

LOC I-EGI 111.7	APCH CRS 184°	Rwy Idg 8025 TDZE 195 Arprt Elev 195
---------------------------	-------------------------	---

[USAF]

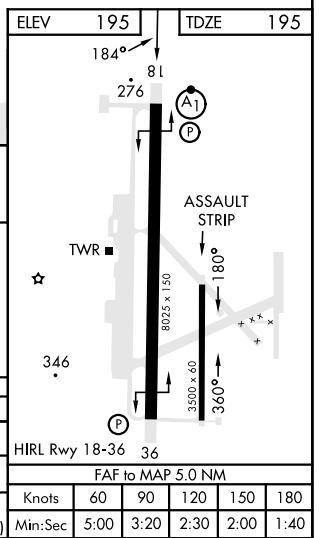
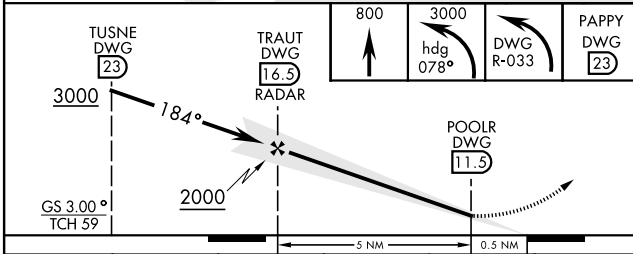
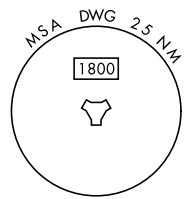
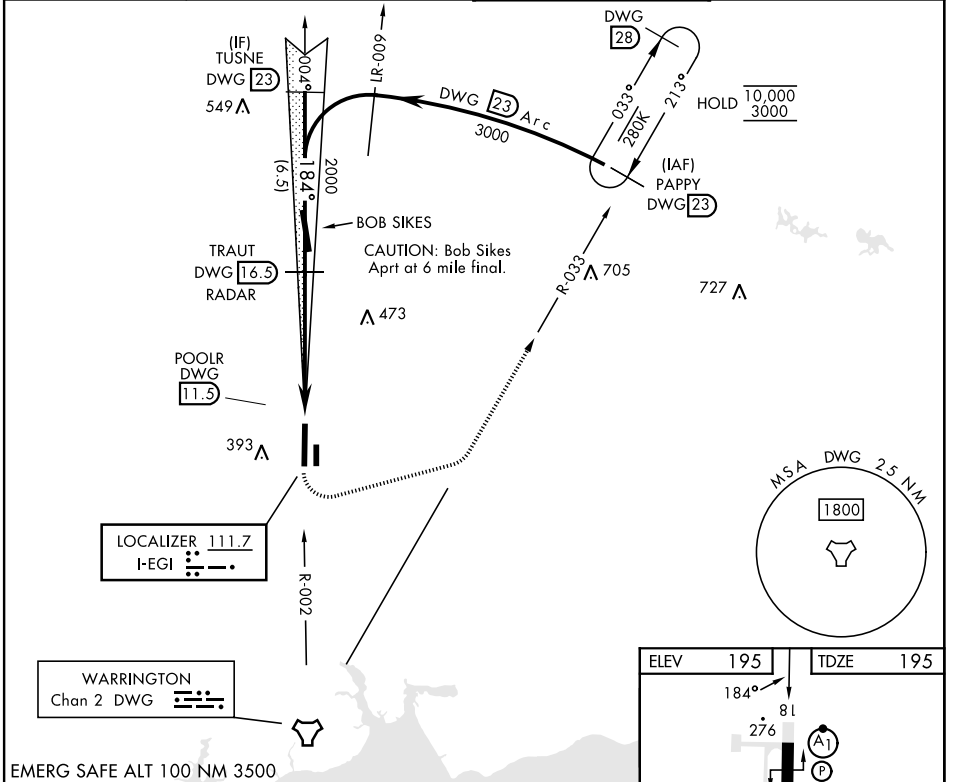
DUKE FLD (EGLIN AF AUX NR 3) (KEGI)

* When ALS inop, increase RVR to 40, vis to ¼ mile.
** When ALS inop, increase RVR to 55, vis to 1 mile.



MISSED APPROACH: Climb to 800, then climbing left turn to 3000 on heading 078° and DWG TACAN R-033 to PAPPY/23 DME and hold.

ATIS ★ 244.575	EGLIN APP CON 125.1 281.45 (271° - 089°) 132.1 360.6 (090° - 270°)	TOWER ★ 133.2 290.425	GND CON 123.25 251.125
--------------------------	--	---------------------------------	----------------------------------



CATEGORY	A	B	C	D	E
S-ILS 18 *	395/24		200	(200-½)	
S-LOC 18 **	540/24	345 (400-½)	540/30	345	(400-¾)
CIRCLING	680-1 485 (600-1)	740-1 545 (600-1)	740-1½ 545 (600-1½)	760-2 565 (600-2)	820-2¼ 625 (700-2¼)

ILS or LOC Z RWY 18

SE-3, 11 JUN 2026 to 09 JUL 2026

SE-3, 11 JUN 2026 to 09 JUL 2026