

VALPARAISO, FLORIDA

RNAV (GPS) Y RWY 18

WAAS CH 89520 W18A	APCH CRS 184°	Rwy Idg TDZE Arprt Elev	8025 195 195
--------------------------	------------------	-------------------------------	--------------------

-(USAF)

DUKE FIELD (EGLIN AF AUX NR 3) (KEGI)

RNP APCH-GPS
 * When ALS inop, increase RVR to 40, vis to 3/4 mile.
 ** When ALS inop, increase CAT A RVR to 40, vis to 3/4 mile; CAT BCDE RVR to 45, vis to 7/8 mile.

ALS-F1 MISSED APPROACH: Climb to 3000 direct WUTAR and hold.

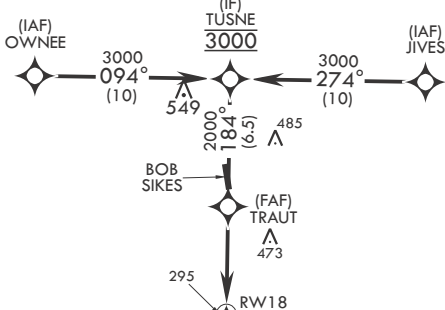
ATIS★
244.575

APP CON
125.1 281.45 271°-089°
132.1 360.6 090°-270°

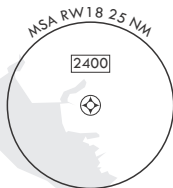
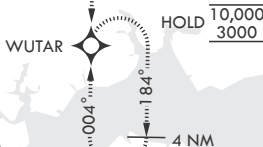
TOWER★
133.2 290.425

GND CON
123.25 251.125

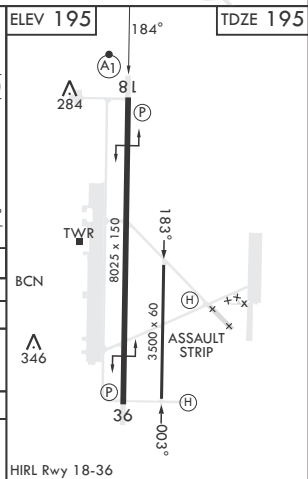
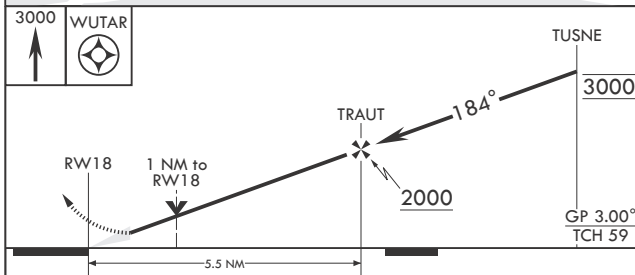
*** When ALS inop, increase RVR to 55, vis to 1 mile.



For uncompensated Baro-VNAV systems, LNAV/VNAV not authorized below -15° C. or above 54° C.



EMERG SAFE ALT 100 NM 3500



CATEGORY	A	B	C	D	E
LPV DA*	395/24		200	(200-½)	
LNAV/VNAV DA**	449/24 254 (300-½)	460/24 265 (300-½)	468/24 273 (300-½)	479/24	284 (300-½)
LNAV MDA***	560/24	365 (400-½)	560/35	365	(400-¾)
CIRCLING	680-1	740-1	740-1½	760-2	820-2¼
	485 (500-1)	545 (600-1)	545 (600-1½)	565 (600-2)	625 (700-2¼)

VALPARAISO, FLORIDA
Orig 26DEC24

30°39'N - 86°31'W

DUKE FIELD (EGLIN AF AUX NR 3) (KEGI)

RNAV (GPS) Y RWY 18

SE-3, 11 JUN 2026 to 09 JUL 2026

SE-3, 11 JUN 2026 to 09 JUL 2026