

VALPARAISO, FLORIDA

# RNAV (GPS) Z RWY 18


WAAS CH 93280 W18B	APCH CRS 184°	Rwy ldg TDZE Arprt Elev	8025 195 195
--------------------------	------------------	-------------------------------	--------------------

(USAF)

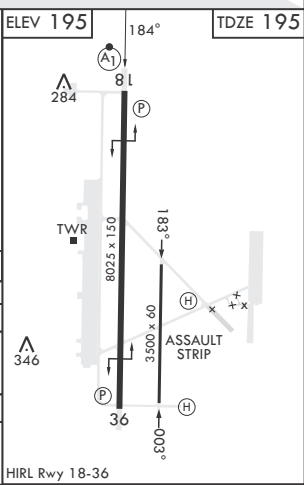
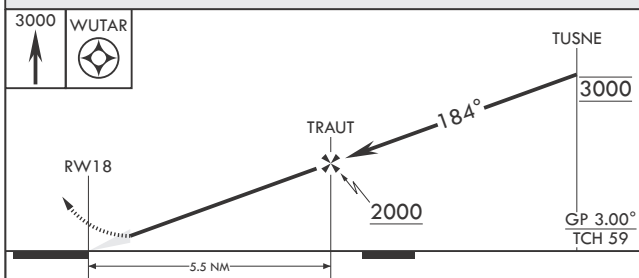
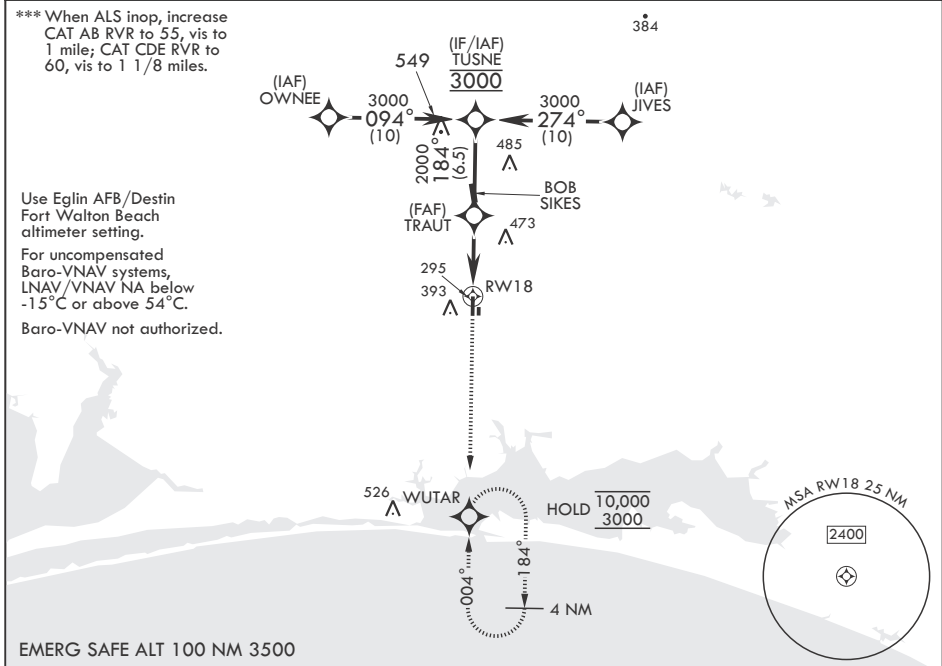
DUKE FIELD (EGLIN AF AUX NR 3) (KEGI)


RNP APCH-GPS

\* When ALS inop, increase RVR to 40, vis to 3/4 mile.  
 \*\* When ALS inop, increase CAT ABC RVR to 45, vis to 7/8 mile; CAT DE RVR to 50, vis to 1 mile.

ALSF-1  MISSED APPROACH: Climb to 3000 direct WUTAR and hold.

ATIS★ 244.575	APP CON 125.1 281.45 271°-089° 132.1 360.6 090°-270°	TOWER★ 133.2 290.425	GND CON 123.25 251.125
------------------	--	-------------------------	---------------------------



CATEGORY	A	B	C	D	E
LPV DA*	434/24		239	(300-1/2)	
LNAV/VNAV DA**	488/24 293 (300-1/2)	499/24 304 (400-1/2)	507/24 312 (400-1/2)	518/26 323 (400-1/2)	
LNAV MDA***	600/24	405 (500-1/2)	600/40	405	(500-3/4)
 CIRCLING	720-1 525 (600-1)	780-1 585 (600-1)	780-1 1/2 585 (600-1 1/2)	780-2 585 (600-2)	860-2 1/4 665 (700-2 1/4)

VALPARAISO, FLORIDA  
 Amdt 1 26DEC24

30°39'N - 86°31'W

DUKE FIELD (EGLIN AF AUX NR 3) (KEGI)

# RNAV (GPS) Z RWY 18

SE-3, 11 JUN 2026 to 09 JUL 2026

SE-3, 11 JUN 2026 to 09 JUL 2026