

WAAS CH <b>56405</b> <b>W25A</b>	APP CRS <b>254°</b>	Rwy Ldg TDZE <b>812</b> Apt Elev <b>813</b>
--	------------------------	---

# RNAV (GPS) RWY 25

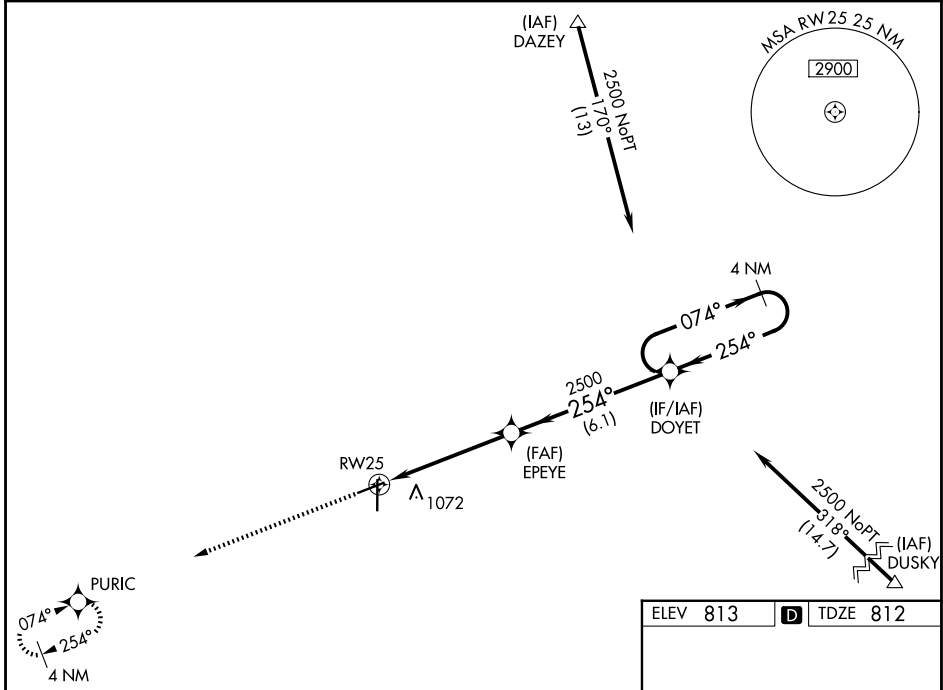
FINDLAY (F'DY)

RNP APCH-GPS.

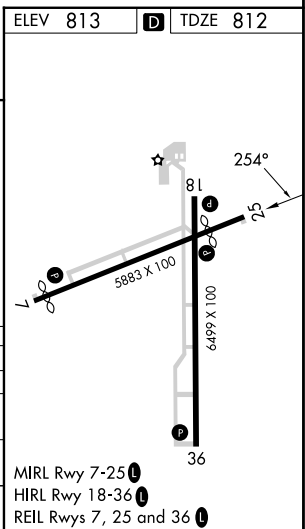
⚠ For uncompensated Baro-VNAV systems, LNAV/VNAV NA below -16°C or above 47°C. Baro-VNAV and VDP NA when using Lima Allen County altimeter setting. When local altimeter setting not received, use Lima Allen County altimeter setting: increase all DAs/MDAs 80 feet; increase LPV visibility 1/8 SM all Cats; increase LNAV Cat C/D and Circling Cat C/D visibility 1/4 SM. Circling Rwy 7 NA at night.

MISSED APPROACH: Climb to 2500 direct PURIC and hold.

ASOS <b>132.85</b>	TOLEDO APP CON <b>120.8 317.55</b>	UNICOM <b>122.725 (CTAF) 0</b>
-----------------------	---------------------------------------	-----------------------------------



2500	PURIC	VGSI and RNAV glidepath not coincident (VGSI Angle 3.00/TCH 33).	4 NM Holding Pattern
*LNAV only			
		EPEYE 2500	DOYET 2500
		← 254°	→ 074° → 2500
			← 254° ← 2500
			GP 3.00° TCH 45
		1.4 NM	3.7 NM
		6.1 NM	
CATEGORY	A	B	C
LPV DA		1116-1	304 (400-1)
LNAV/VNAV DA		1411-2	599 (600-2)
LNAV MDA	1280-1	468 (500-1)	1280-1½ 468 (500-1½)
CIRCLING	1440-1	627 (700-1)	1440-1¾ 627 (700-1¾)



EC-2, 11 JUN 2026 to 09 JUL 2026

EC-2, 11 JUN 2026 to 09 JUL 2026