

WAAS CH <b>72705</b> <b>W36A</b>	APP CRS <b>005°</b>	Rwy Ldg TDZE Apt Elev	<b>6499</b> <b>809</b> <b>813</b>
--	------------------------	-----------------------------	---

# RNAV (GPS) RWY 36

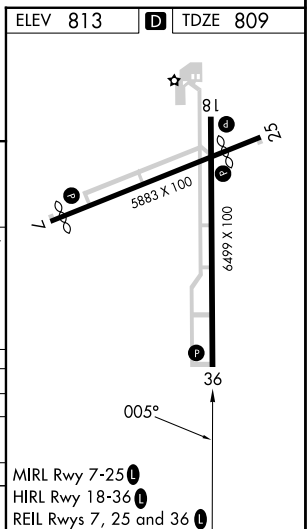
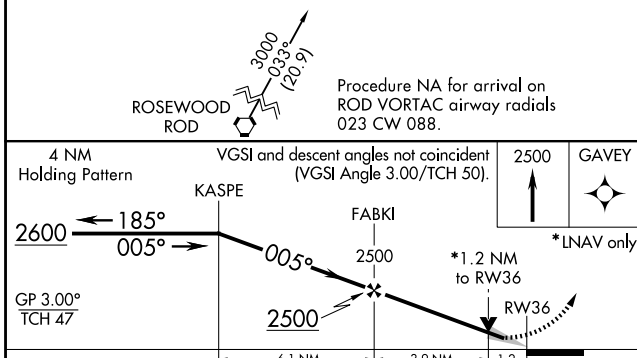
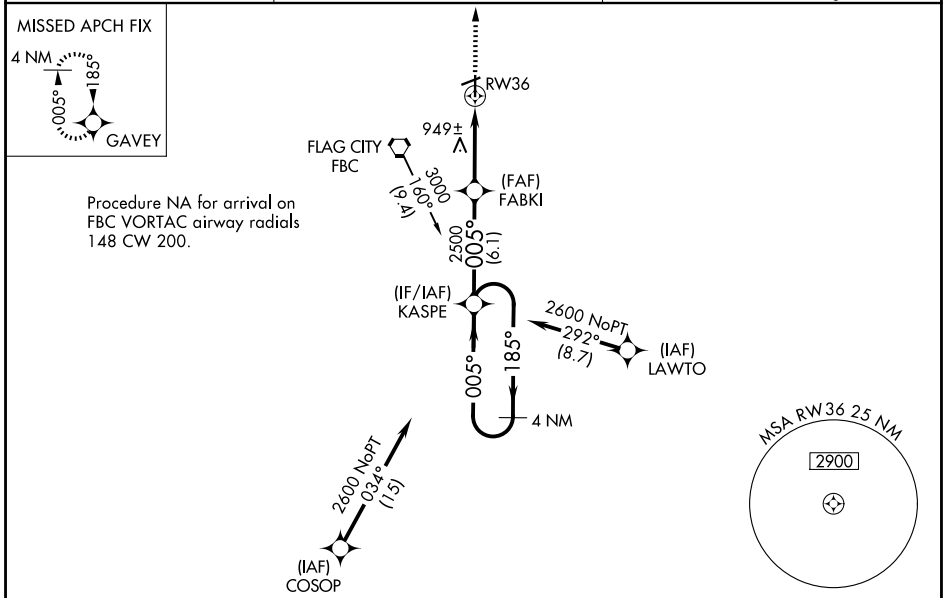
FINDLAY (F'DY)

RNP APCH - GPS.

**▼** For uncompensated Baro-VNAV systems, LNAV/VNAV NA below -16°C or above 47°C.  
**▲** Baro-VNAV and VDP NA when using Lima Allen County altimeter setting.  
 When local altimeter setting not received, use Lima Allen County altimeter setting; increase all DAs/MDAs 80 feet; increase LNAV Cat C/D visibility 1/8 SM and Circling Cat C/D visibility 1/4 SM.  
 Circling Rwy 7 NA at night.

**MISSED APPROACH:**  
 Climb to 2500 direct GAVEY and hold.

ASOS <b>132.85</b>	TOLEDO APP CON <b>120.8 317.55</b>	UNICOM <b>122.725 (CTAF)</b>
-----------------------	---------------------------------------	---------------------------------



CATEGORY	A	B	C	D
LPV DA		1106-1	297 (300-1)	
LNAV/VNAV DA		1229-1½	420 (500-1½)	
LNAV MDA	1220-1	411 (500-1)	1220-1¼	411 (500-1¼)
CIRCLING	1440-1	627 (700-1)	1440-1¾	1540-2¼
			627 (700-1¾)	727 (800-2¼)

EC-2, 11 JUN 2026 to 09 JUL 2026

EC-2, 11 JUN 2026 to 09 JUL 2026