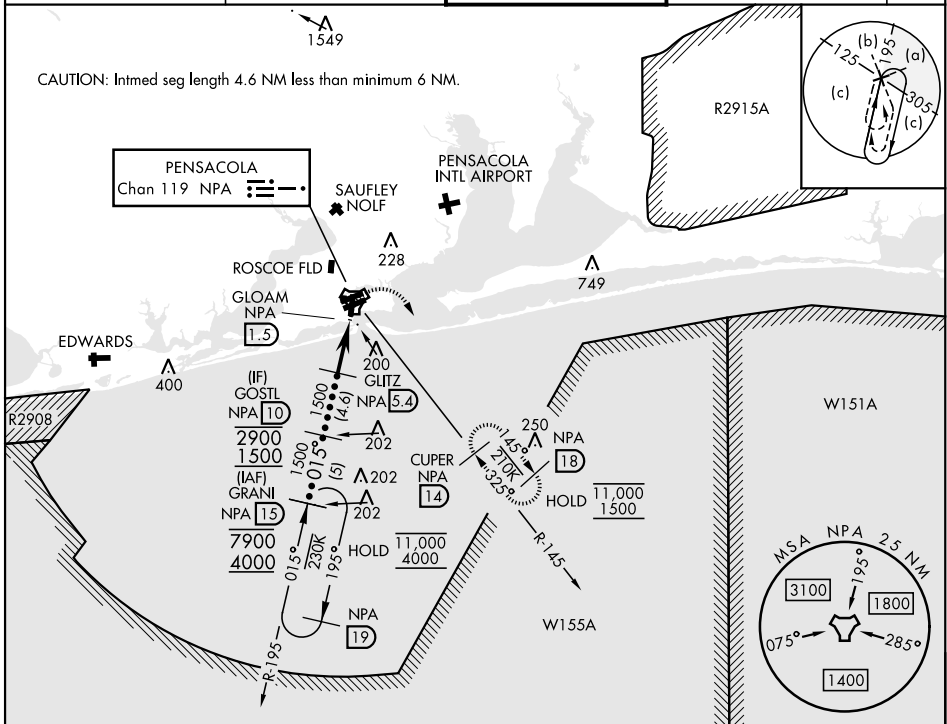


TACAN NPA Chan 119	APCH CRS 015°	Rwy Ldg 7136 TDZE 28 Arpt Elev 28	[USN] PENSACOLA NAS (FORREST SHERMAN FLD) (KNPA)
-----------------------	------------------	--	--

RADAR required

MISSED APPROACH: Climbing right turn to 1500 via NPA TACAN R-145 to CUPER and hold.

ATIS 124.35 266.8	PENSACOLA APP CON 120.65 270.8	SHERMAN TOWER 120.7 340.2	GND CON 121.7 336.4	ASR/ PAR
----------------------	-----------------------------------	------------------------------	------------------------	-------------



SE-3, 11 JUN 2026 to 09 JUL 2026

SE-3, 11 JUN 2026 to 09 JUL 2026

ELEV	28	TDZE	28
------	----	------	----

EMERG SAFE ALT 100 NM 3100

