

# HI-TACAN Z RWY 25R

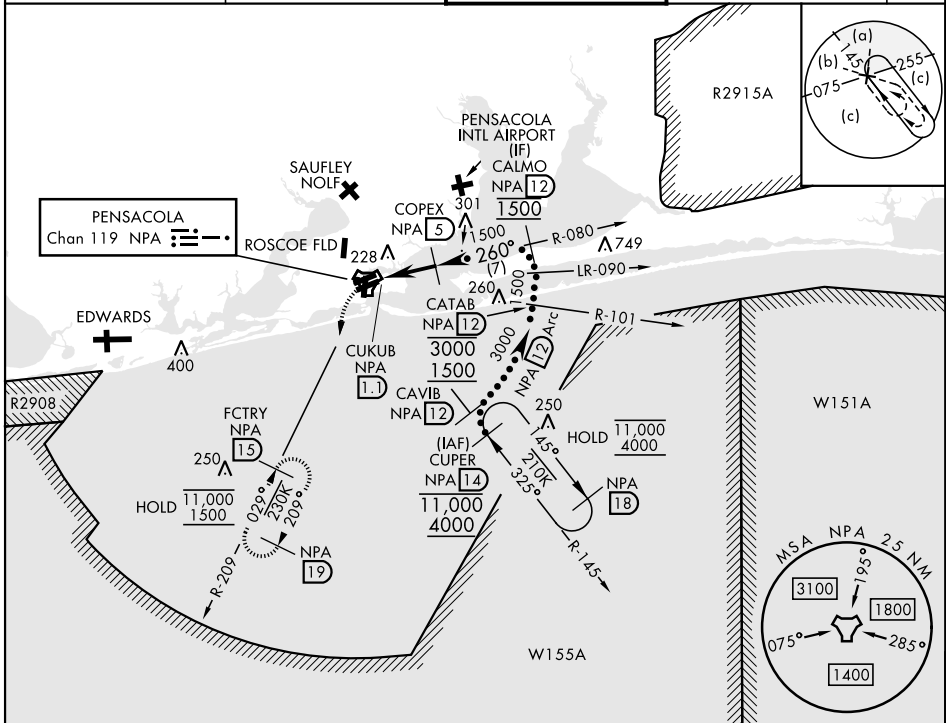
TACAN NPA Chan 119	APCH CRS 260°	Rwy Idg TDZE 8001 21	Arprt Elev 28
-----------------------	------------------	----------------------------	------------------

[USN] PENSACOLA NAS (FORREST SHERMAN FLD) (KNPA)

RADAR required

MISSED APPROACH: Climbing left turn to 1500 via NPA TACAN R-209 to FCTRY and hold.

ATIS 124.35 266.8	PENSACOLA APP CON 120.65 270.8	SHERMAN TOWER 120.7 340.2	GND CON 121.7 336.4	ASR/PAR
----------------------	-----------------------------------	------------------------------	------------------------	---------

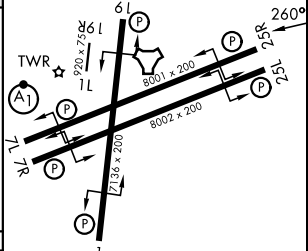
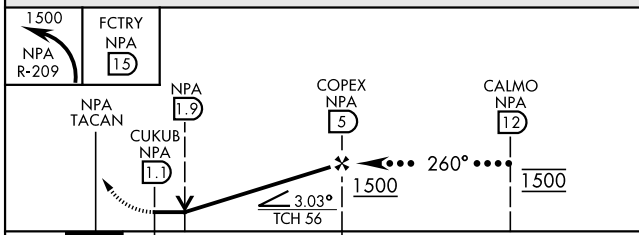


SE-3, 11 JUN 2026 to 09 JUL 2026

SE-3, 11 JUN 2026 to 09 JUL 2026

ELEV	28	TDZE	21
------	----	------	----

EMERG SAFE ALT 100 NM 3100



CATEGORY	C	D	E
S-25R		500-1 <sup>3</sup> / <sub>8</sub> 479 (500-1 <sup>3</sup> / <sub>8</sub> )	
CIRCLING	540-1 <sup>1</sup> / <sub>2</sub> 512 (600-1 <sup>1</sup> / <sub>2</sub> )	600-2 572 (600-2)	640-2 <sup>1</sup> / <sub>4</sub> 612 (700-2 <sup>1</sup> / <sub>4</sub> )

HIRL Rwy 1-19, 07L-25R, 07R-25L  
REIL Rwy 1-19, 07L-25R, 07R-25L

# HI-TACAN Z RWY 25R