

PENSACOLA, FLORIDA

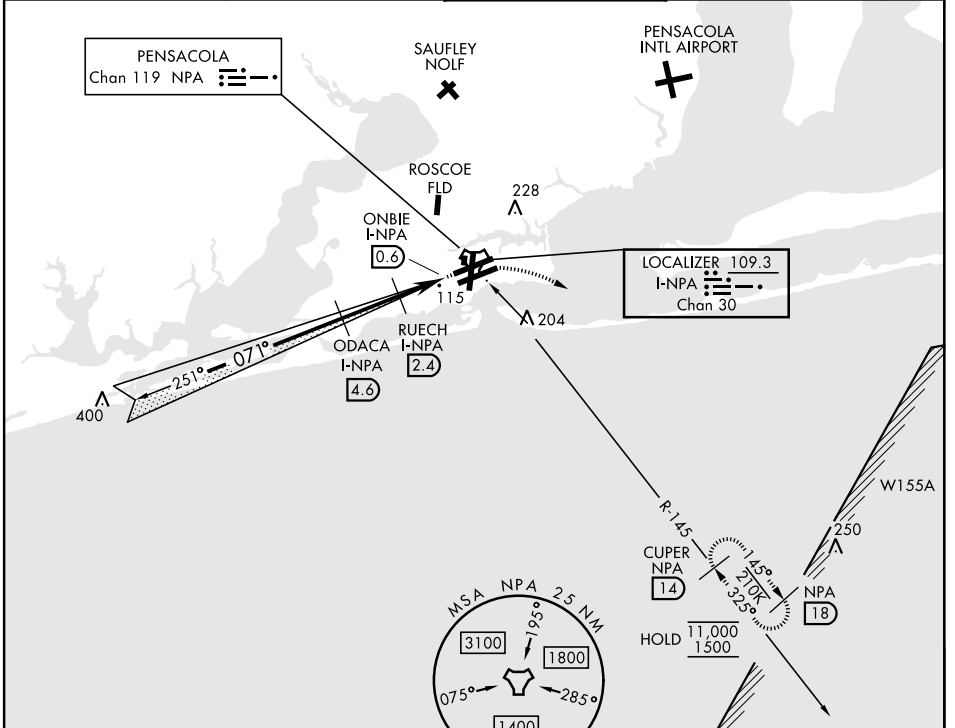
ILS Z or LOC Z RWY 7L

LOC/DME I-NPA 109.3 Chan 30	APCH CRS 071°	Rwy Idg TDZE Arprt Elev 8001 23 28
---	-------------------------	--

[USN] PENSACOLA NAS (FORREST SHERMAN FLD) (KNPA)

RADAR or TACAN, and DME required.	ALSF-1 	MISSED APPROACH: Climb to 600. Then climbing right turn to 1500 via NPA R-145 to CUPER and hold. Aircraft not TACAN equipped: Climb to 600, then climbing right turn to 1500 heading 190°. Expect RADAR vectors.
-----------------------------------	------------	--

ATIS 124.35 266.8	PENSACOLA APP CON 120.65 270.8	SHERMAN TOWER 120.7 340.2	GND CON 121.7 336.4	ASR/ PAR
-----------------------------	--	-------------------------------------	-------------------------------	-------------

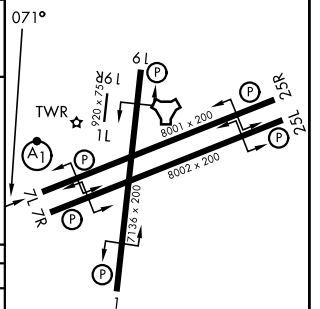
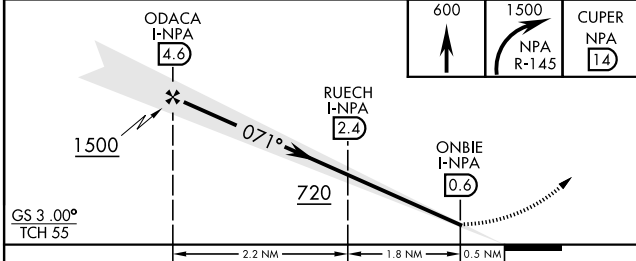


SE-3, 11 JUN 2026 to 09 JUL 2026

SE-3, 11 JUN 2026 to 09 JUL 2026

ELEV	28	TDZE	23
------	----	------	----

EMERG SAFE ALT 100 NM 3100



CATEGORY	A	B	C	D	E
S-ILS 7L*	223-1/2		200	(200-1/2)	
S-LOC 7L**	380-1/2	357 (400-1/2)	380-5/8	357	(400-5/8)
CIRCLING	520-1	492 (500-1)	540-1 1/2 512 (600-1/2)	600-2 572 (600-2)	640-2 1/4 612 (700-2 1/4)

HIRL Rwy 1-19,
07L-25R, 07R-25L
REIL Rwy 1-19,
07L-25R, 07R-25L

PENSACOLA, FLORIDA

30° 21' N-87° 19' W

PENSACOLA NAS (FORREST SHERMAN FLD) (KNPA)

Amtd 6 19FEB26

ILS Z or LOC Z RWY 7L