

PENSACOLA, FLORIDA

RNAV (GPS) RWY 7R

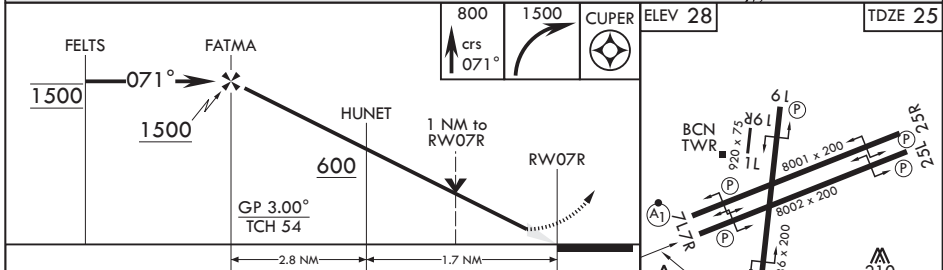
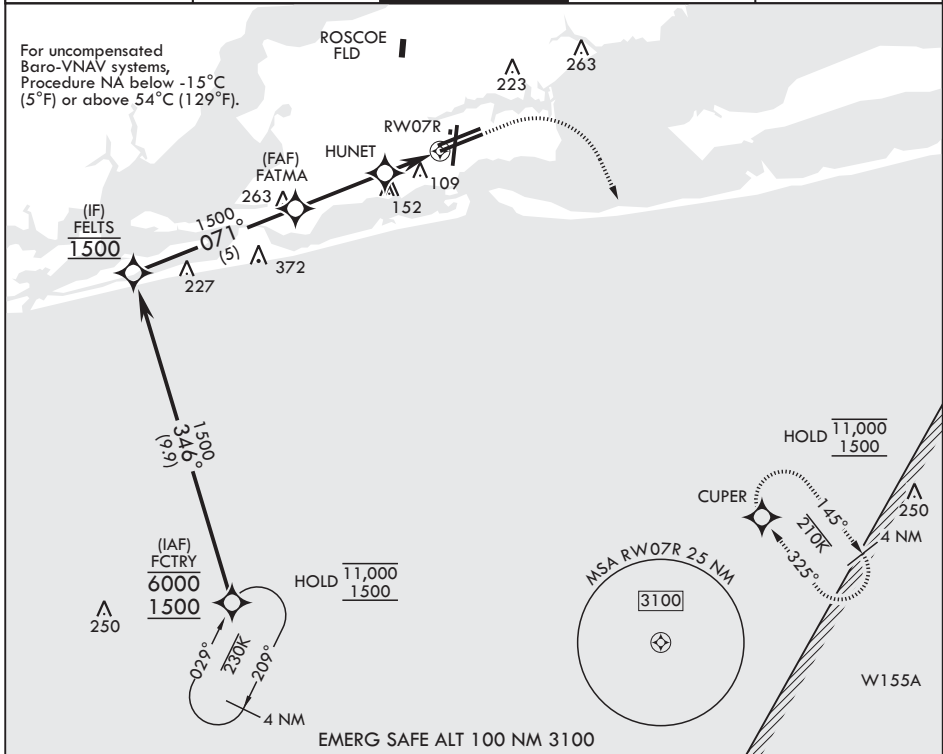
(USN)

PENSACOLA NAS (FORREST SHERMAN FLD) (KNPA)

APCH CRS	Rwy Idg	8002
071°	TDZE	25
	Arprt Elev	28

RNP APCH - GPS	MISSED APPROACH: Climb to 800 then climbing right turn to 1500 direct CUPER and hold.
RADAR required	

ATIS 124.35 266.8	APP CON 120.65 270.8	SHERMAN TOWER 120.7 340.2	SHERMAN GND CON 121.7 336.4	ASR/PAR
----------------------	-------------------------	------------------------------	--------------------------------	---------



CATEGORY	A	B	C	D	E
LNAV/VNAV DA	275-1	250	(300-1)	279-1 254 (300-1)	377-1 352 (400-1)
LNAV MDA	380-1		355	(400-1)	
CIRCLING	520-1	492 (500-1)	540-1½ 512 (600-1½)	600-2 572 (600-2)	640-2¼ 612 (700-2¼)

PENSACOLA, FLORIDA 30°21'N - 87°19'W PENSACOLA NAS (FORREST SHERMAN FLD) (KNPA)

Amdt 4 12JUN25

RNAV (GPS) RWY 7R

SE-3, 11 JUN 2026 to 09 JUL 2026

SE-3, 11 JUN 2026 to 09 JUL 2026