

# TACAN Y RWY 19

TACAN NPA Chan <b>119</b>	APCH CRS <b>182°</b>	Rwy ldg TDZE Arprt Elev	<b>7136</b> <b>22</b> <b>28</b>
------------------------------	-------------------------	-------------------------------	---------------------------------------

[USN]

PENSACOLA NAS (FORREST SHERMAN FLD) (KNPA)

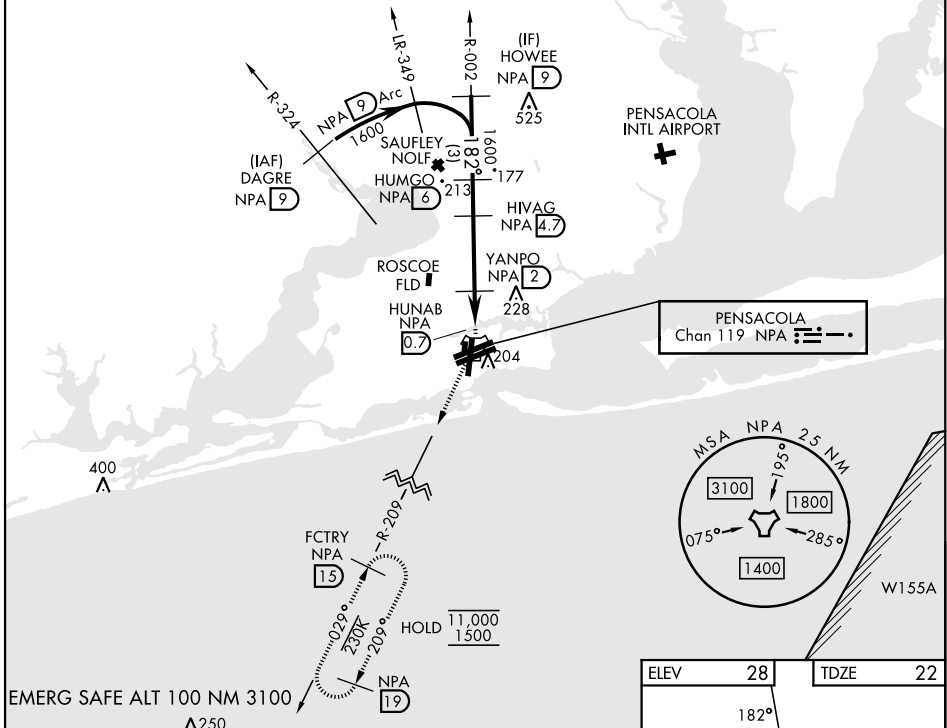
RADAR required  
▼

MISSED APPROACH: Climbing right turn to 1500 via NPA TACAN R-209 to FCTRY and hold.

ATIS <b>124.35 266.8</b>	PENSACOLA APP CON <b>120.65 270.8</b>	SHERMAN TOWER <b>120.7 340.2</b>	GND CON <b>121.7 336.4</b>	ASR/ PAR
-----------------------------	--	-------------------------------------	-------------------------------	-------------

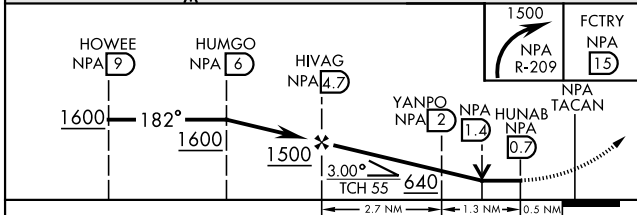
CAUTION: Intermediate seg len 4.3 NM is less than minimum 6 NM.

The final apch course is 427' from rwy centerline at 3000' from thld.

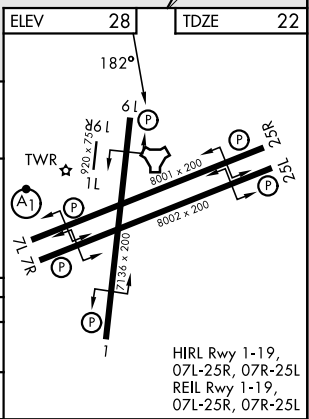


SE-3, 11 JUN 2026 to 09 JUL 2026

SE-3, 11 JUN 2026 to 09 JUL 2026



CATEGORY	A	B	C	D	E
S-19	440-1	418 (500-1)	440-1½	418 (500-1½)	
CIRCLING	520-1	492 (500-1)	540-1½ 512 (600-1½)	600-2 572 (600-2)	640-2¼ 612 (700-2¼)



# TACAN Y RWY 19