

TACAN Y RWY 25L

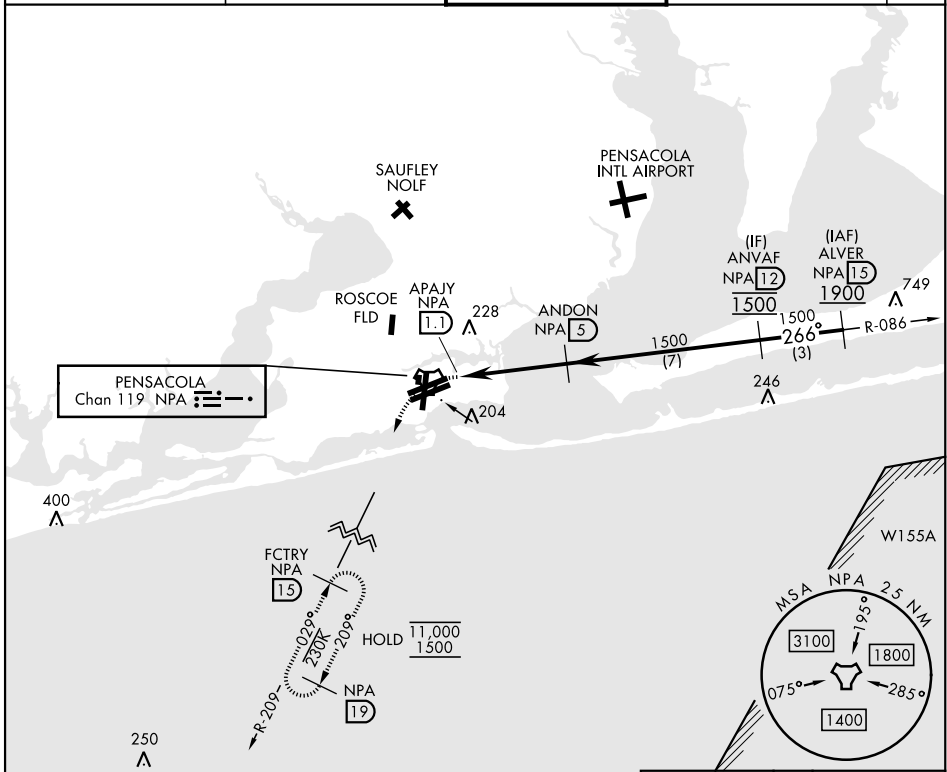
TACAN NPA Chan 119	APCH CRS 266°	Rwy Ildg TDZE Arprt Elev	8002 22 28
------------------------------	-------------------------	-----------------------------	---------------------------------------

[USN]

PENSACOLA NAS (FORREST SHERMAN FLD) (KNPA)

RADAR required ▼	MISSED APPROACH: Climbing left turn to 1500 via NPA TACAN R-209 to FCTRY and hold.			
---------------------	--	--	--	--

ATIS 124.35 266.8	PENSACOLA APP CON 120.65 270.8	SHERMAN TOWER 120.7 340.2	GND CON 121.7 336.4	ASR/PAR
-----------------------------	--	-------------------------------------	-------------------------------	---------

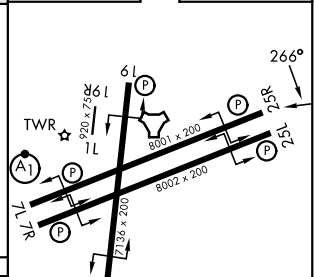
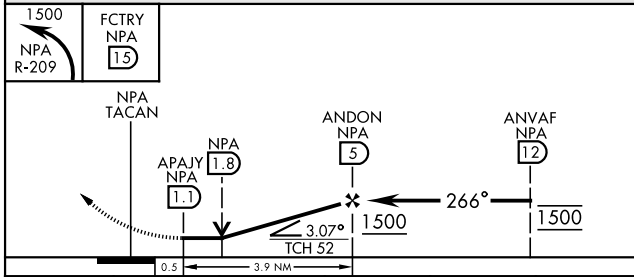


SE-3, 11 JUN 2026 to 09 JUL 2026

SE-3, 11 JUN 2026 to 09 JUL 2026

EMERG SAFE ALT 100 NM 3100

ELEV	28	TDZE	22
------	----	------	----



CATEGORY	A	B	C	D	E
S-25L	460-1	438 (500-1)	460-1¼	438 (500-1¼)	
CIRCLING	520-1	492 (500-1)	540-1½ 512 (600-1½)	600-2 572 (600-2)	640-2¼ 612 (700-2¼)

HIRL Rwy 1-19,
07L-25R, 07R-25L
REIL Rwy 1-19,
07L-25R, 07R-25L

TACAN Y RWY 25L