

TACAN Y RWY 25R

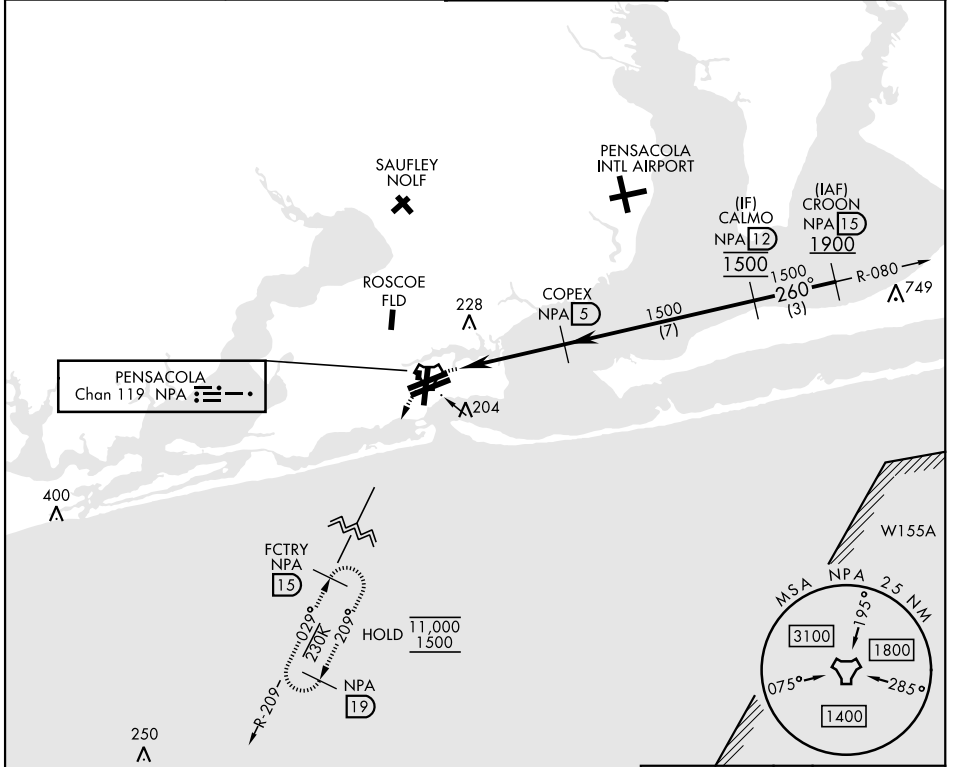
TACAN NPA Chan 119	APCH CRS 260°	Rwy Idg TDZE Arprt Elev	8001 21 28
-----------------------	------------------	----------------------------	------------------

[USN]

PENSACOLA NAS (FORREST SHERMAN FLD) (KNPA)

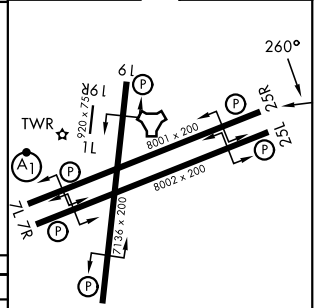
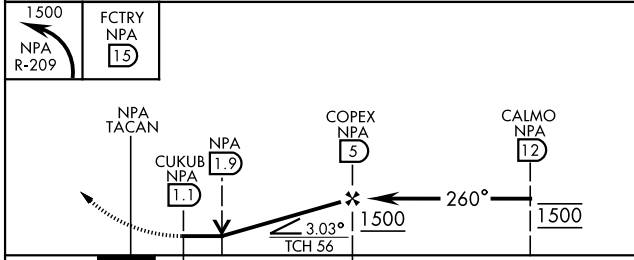
RADAR required ▼	MISSED APPROACH: Climbing left turn to 1500 via NPA TACAN R-209 to FCTRY and hold.
---------------------	--

ATIS 124.35 266.8	PENSACOLA APP CON 120.65 270.8	SHERMAN TOWER 120.7 340.2	GND CON 121.7 336.4	ASR/ PAR
----------------------	-----------------------------------	------------------------------	------------------------	-------------



EMERG SAFE ALT 100 NM 3100

ELEV	28	TDZE	21
------	----	------	----



CATEGORY	A	B	C	D	E
S-25R	500-1 479 (500-1)		500-1 3/8 479 (500-1 3/8)		
CIRCLING	520-1 492 (500-1)		540-1 1/2 512 (600-1 1/2)	600-2 572 (600-2)	640-2 1/4 612 (700-2 1/4)

HIRL Rwy 1-19,
07L-25R, 07R-25L
REIL Rwy 1-19,
07L-25R, 07R-25L

TACAN Y RWY 25R

SE-3, 11 JUN 2026 to 09 JUL 2026

SE-3, 11 JUN 2026 to 09 JUL 2026