

PENSACOLA, FLORIDA

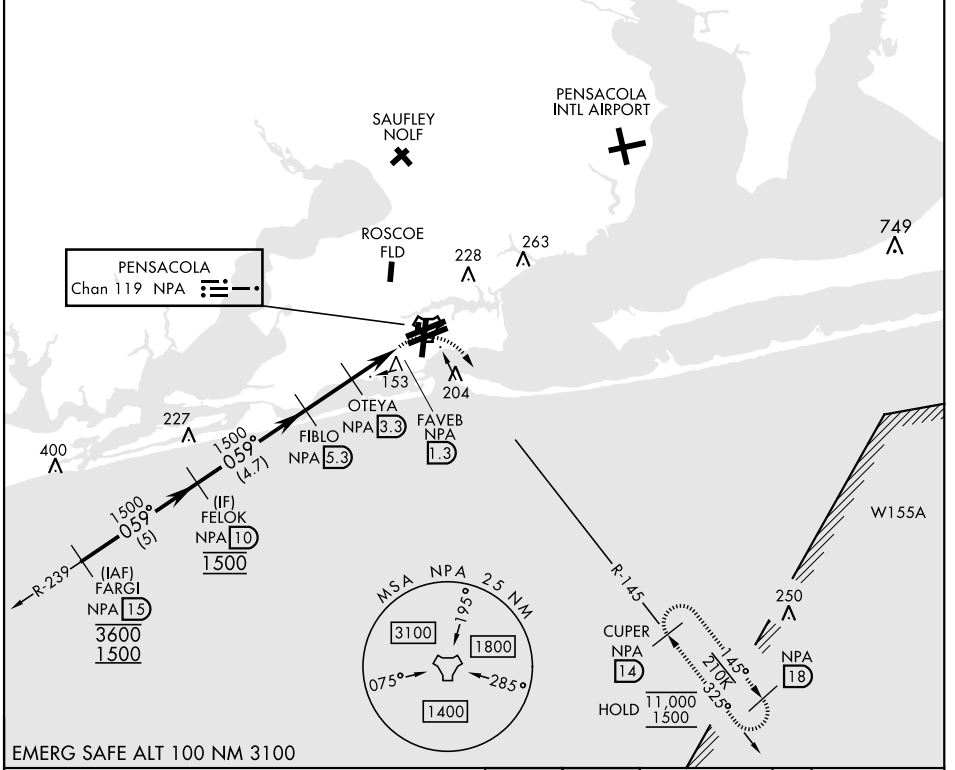
TACAN Y RWY 7R

TACAN NPA Chan 119	APCH CRS 059°	Rwy Idg TDZE Arprt Elev 8002 25 28	[USN]	PENSACOLA NAS (FORREST SHERMAN FLD) (KNPA)
-----------------------	-------------------------	------------------------------------------------------------------------	-------	--------------------------------------------

RADAR required	MISSED APPROACH: Climbing right turn to 1500 via NPA TACAN R-145 to CUPER and hold.
----------------	-------------------------------------------------------------------------------------

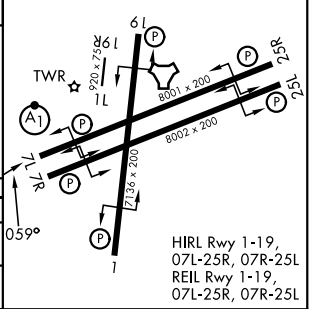
ATIS 124.35 266.8	PENSACOLA APP CON 120.65 270.8	SHERMAN TOWER 120.7 340.2	GND CON 121.7 336.4	ASR/ PAR
-----------------------------	------------------------------------------	-------------------------------------	-------------------------------	-------------

CAUTION: Intmed segment length 4.7 NM is less than the minimum 6 NM.



EMERG SAFE ALT 100 NM 3100

	FELOK NPA 10		FIBLO NPA 5.3		OTEYA NPA 3.3		FAVEB NPA 1.3		NPA TACAN		ELEV 28	TDZE 25
	1500		1500		860		2.98° TCH 54		1500		CUPER NPA 14	
	059°		2 NM		2 NM		0.5		1500		R-145	
CATEGORY	A	B	C	D	E							
S-7R	440-1	415 (500-1)	440-1½	415 (500-1½)								
CIRCLING	520-1	492 (500-1)	540-1½ 512 (600-1½)	600-2 572 (600-2)	640-2¼ 612 (700-2¼)							



PENSACOLA, FLORIDA 30° 21' N-87° 19' W PENSACOLA NAS (FORREST SHERMAN FLD) (KNPA)

Amdt 1 12JUN25

TACAN Y RWY 7R

SE-3, 11 JUN 2026 to 09 JUL 2026

SE-3, 11 JUN 2026 to 09 JUL 2026