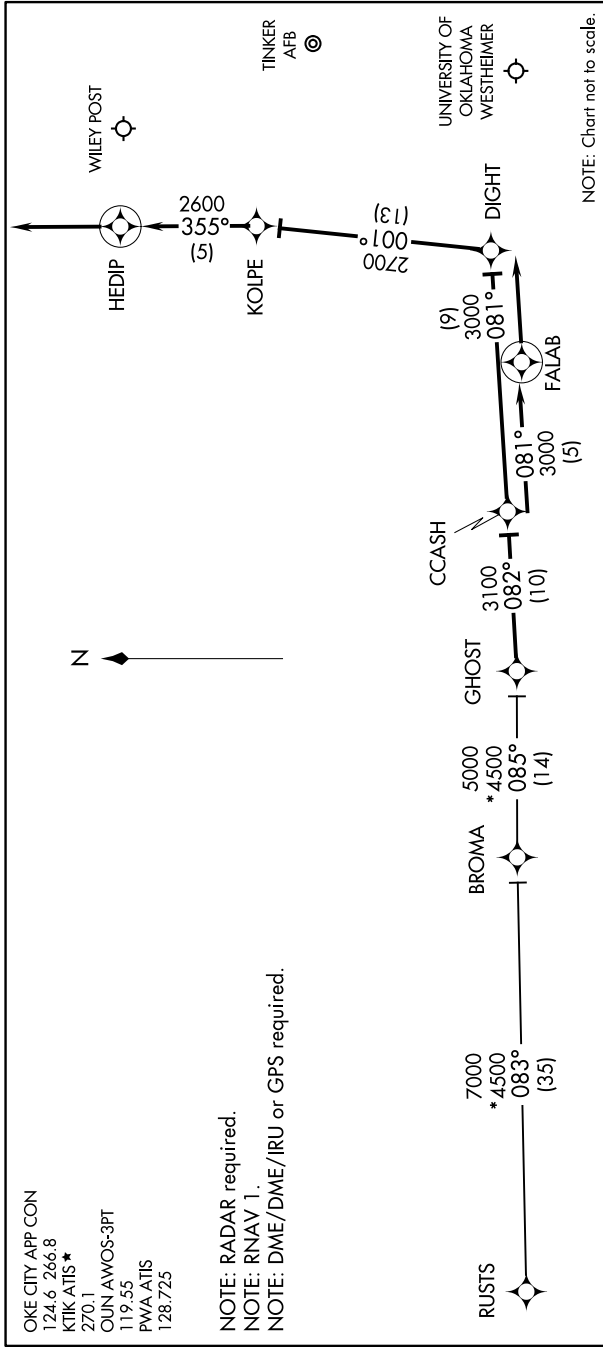


# CCASH ONE ARRIVAL (RNAV)

OKLAHOMA CITY, OKLAHOMA

9200 JUN 60 01 2026 00R 11 1-C-S



**ARRIVAL ROUTE DESCRIPTION**

BROMA TRANSITION (BROMA.CCASH1):  
RUSTS TRANSITION (RUSTS.CCASH1):

From GHOST on track 082° to CCASH.

LANDING OUN/KTIK: From CCASH on track 081° to FALAB, then on track 081°. Expect radar vectors to final approach course.

LANDING PWA RW17L: From CCASH on track 081° to DIGHT, then on track 001° to KOLOPE, then on track 355° to HEDIP, then on track 355°. Expect radar vectors to final approach course.

LANDING PWA RW35R: From CCASH on track 081° to FALAB, then on track 081°. Expect radar vectors to final approach course.

NOTE: Chart not to scale.

# CCASH ONE ARRIVAL (RNAV)

OKLAHOMA CITY, OKLAHOMA