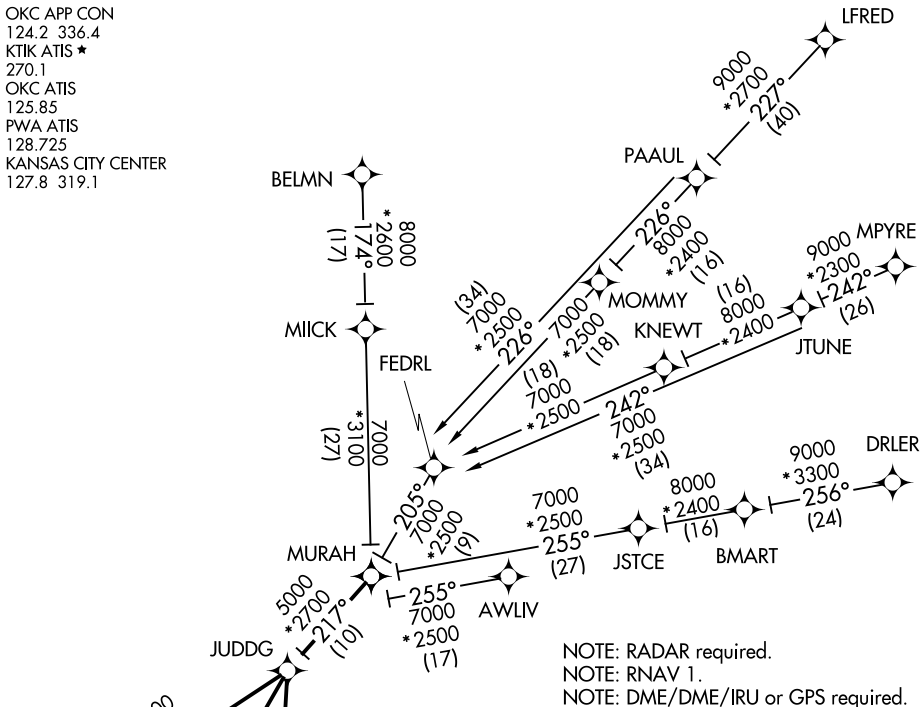


JUDDG TWO ARRIVAL (RNAV)

OKLAHOMA CITY, OKLAHOMA

OKC APP CON  
124.2 336.4  
KTIK ATIS \*  
270.1  
OKC ATIS  
125.85  
PWA ATIS  
128.725  
KANSAS CITY CENTER  
127.8 319.1



NOTE: RADAR required.  
NOTE: RNAV 1.  
NOTE: DME/DME/IRU or GPS required.

ARRIVAL ROUTE DESCRIPTION

- AWLV TRANSITION (AWLV.JUDDG2)
- BELMN TRANSITION (BELMN.JUDDG2): (For non-GPS equipped aircraft, IFI DME must be operational).
- BMART TRANSITION (BMART.JUDDG2)
- DRLER TRANSITION (DRLER.JUDDG2)
- JTUNE TRANSITION (JTUNE.JUDDG2)
- LFRED TRANSITION (LFRED.JUDDG2)
- MPYRE TRANSITION (MPYRE.JUDDG2)
- PAAUL TRANSITION (PAAUL.JUDDG2)

From MURAH on track 217° to JUDDG.  
LANDING OUN/TIK: From JUDDG on track 192° to PEGOE, then on track 192°. Expect radar vectors to final approach course.

LANDING PWA RWY 17L: From JUDDG on track 236° to ODPPIE, then on track 236°. Expect radar vectors to final approach course.

LANDING PWA RWY 35R: From JUDDG on track 225° to QUOIT, then on track 225°. Expect radar vectors to final approach course.

NOTE: Chart not to scale.

JUDDG TWO ARRIVAL (RNAV)

(MURAH.JUDDG2) 10NOV16

OKLAHOMA CITY, OKLAHOMA

SC-1, 11 JUN 2026 to 09 JUL 2026

SC-1, 11 JUN 2026 to 09 JUL 2026