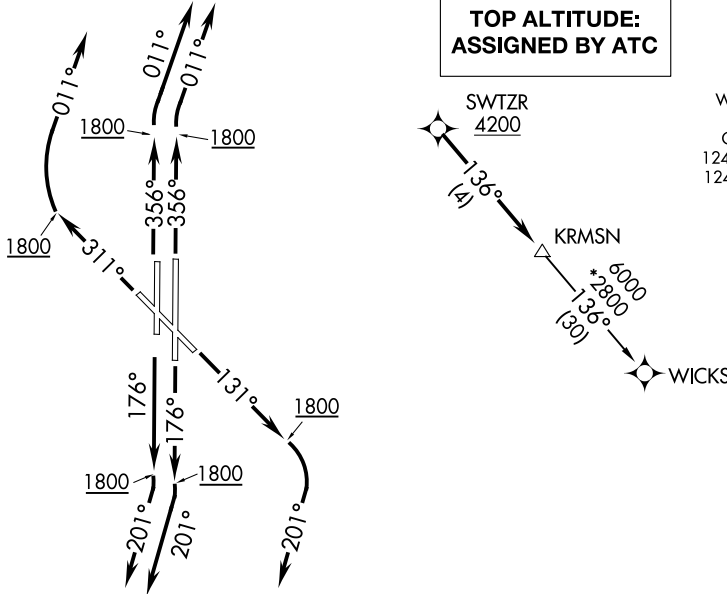


# KRMSN FOUR DEPARTURE (RNAV)

OKLAHOMA CITY, OKLAHOMA

**TOP ALTITUDE:  
ASSIGNED BY ATC**

ATIS  
128.725  
GND CON  
121.7  
WILEY POST TOWER\*  
126.9 306.9  
OKE CITY DEP CON  
124.2 336.4 (NORTH)  
124.6 266.8 (SOUTH)



### TAKEOFF MINIMUMS

Rwys 13, 17L/R, 31, 35L/R:

Standard with minimum climb of 500' per NM to 2100.

- NOTE: RADAR required.
- NOTE: DME/DME/IRU or GPS required.
- NOTE: RNAV 1.

NOTE: Chart not to scale.



### DEPARTURE ROUTE DESCRIPTION

- TAKEOFF RUNWAY 13:** Climb on heading 131° to 1800, then right turn heading 201° or as assigned by ATC, expect RADAR vectors to cross SWTZR at or above 4200, thence . . .
- TAKEOFF RUNWAYS 17L/R:** Climb on heading 176° to 1800, then right turn heading 201° or as assigned by ATC, expect RADAR vectors to cross SWTZR at or above 4200, thence . . .
- TAKEOFF RUNWAY 31:** Climb on heading 311° to 1800, then right turn heading 011° or as assigned by ATC, expect RADAR vectors to cross SWTZR at or above 4200, thence . . .
- TAKEOFF RUNWAY 35L:** Climb on heading 356° to 1800, then heading 011° or as assigned by ATC, expect RADAR vectors to cross SWTZR at or above 4200, thence . . .
- TAKEOFF RUNWAY 35R:** Climb on heading 356° to 1800, then right turn heading 011° or as assigned by ATC, expect RADAR vectors to cross SWTZR at or above 4200, thence . . .

. . . on track 136° to KRMSN, then on (transition). Maintain ATC assigned altitude.  
Expect filed altitude 10 minutes after departure.

WICKS TRANSITION (KRMSN4.WICKS)