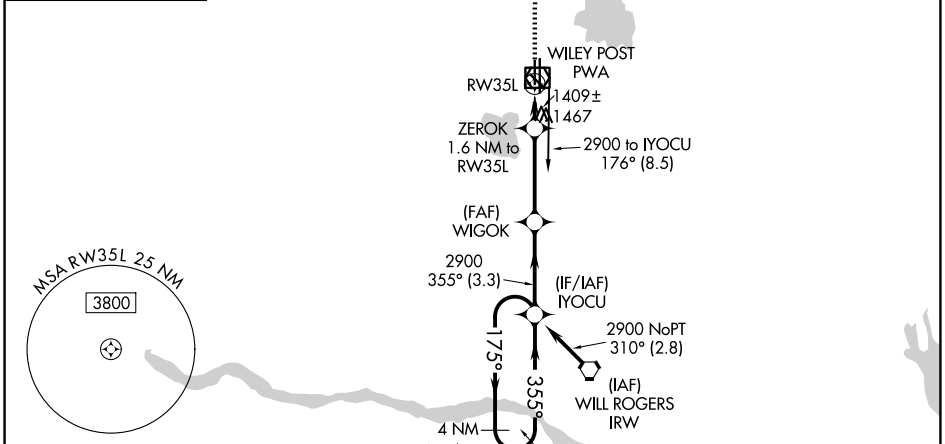
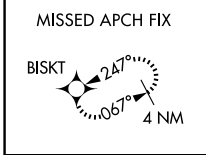


WAAS CH 78437 W35B	APP CRS 355°	Rwy Ldg TDZE Apt Elev	5001 1277 1300
--	------------------------	-----------------------------	---

RNAV (GPS) RWY 35L

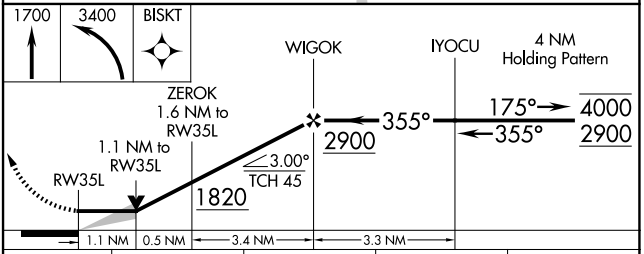
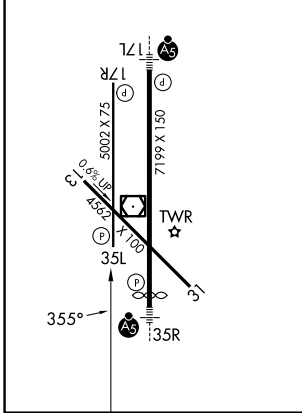
WILEY POST (PWA)

RNP APCH-GPS.		MISSED APPROACH: Climb to 1700 then climbing left turn to 3400 direct BISKT and hold.		
ATIS 128.725	OKE CITY APP CON 124.6 266.8	WILEY POST TOWER ★ 126.9(CTAF) 0 306.9	GND CON 121.7	UNICOM 122.95



ELEV 1300	D	TDZE 1277
-----------	---	-----------

REIL Rwys 17R and 35L
HIRL Rwy 17L-35R
MIRL Rwys 13-31 and 17R-35L



CATEGORY		A	B	C	D
LP	MDA	1660-1	383 (400-1)	1660-1½	383 (400-1½)
LNAV	MDA	1720-1	443 (500-1)	1720-1¾	443 (500-1¾)
CIRCLING		1780-1	480 (500-1)	1880-1½ 580 (600-1½)	1880-2 580 (600-2)

SC-1, 11 JUN 2026 to 09 JUL 2026

SC-1, 11 JUN 2026 to 09 JUL 2026