

(WENDY3.WENDY) 17341

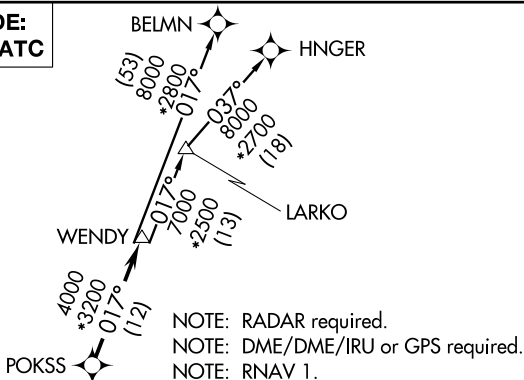
AL-739 (FAA)

WILEY POST (PWA)  
OKLAHOMA CITY, OKLAHOMA

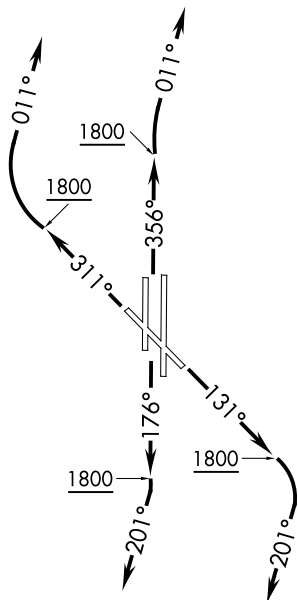
# WENDY THREE DEPARTURE (RNAV)

ATIS  
128.725  
GND CON  
121.7  
WILEY POST TOWER ★  
126.9 306.9  
OKE CITY DEP CON  
124.6 266.8

**TOP ALTITUDE:  
ASSIGNED BY ATC**



**TAKEOFF MINIMUMS**  
Rwys 13, 17R, 31, 35L/R: Standard with  
minimum climb of 500' per NM to 2100.



NOTE: Chart not to scale.

## DEPARTURE ROUTE DESCRIPTION

**TAKEOFF RWY 13:** Climb heading 131° to 1800, then right turn heading 201° or as assigned by ATC, expect RADAR vectors to POKSS, thence . . .

**TAKEOFF RWYS 17L/R:** Climb heading 176° to 1800, then right turn heading 201° or as assigned by ATC, expect RADAR vectors to POKSS, thence . . .

**TAKEOFF RWY 31:** Climb heading 311° to 1800, then right turn heading 011° or as assigned by ATC, expect RADAR vectors to POKSS, thence . . .

**TAKEOFF RWYS 35L:** Climb heading 356° to 1800, then heading 011° or as assigned by ATC, expect RADAR vectors to POKSS, thence . . .

**TAKEOFF RWYS 35R:** Climb heading 356° to 1800, then right turn heading 011° or as assigned by ATC, expect RADAR vectors to POKSS, thence . . .

. . . on track 017° to WENDY, then on (transition). Maintain 3000 or as assigned by ATC. Expect filed altitude 10 minutes after departure.

BELMN TRANSITION (WENDY3.BELMN)

HNGER TRANSITION (WENDY3.HNGER)

LARKO TRANSITION (WENDY3.LARKO)

# WENDY THREE DEPARTURE (RNAV)

(WENDY3.WENDY) 07DEC17

OKLAHOMA CITY, OKLAHOMA  
WILEY POST (PWA)

SC-1, 11 JUN 2026 to 09 JUL 2026

SC-1, 11 JUN 2026 to 09 JUL 2026