

# KINGDOM FIVE DEPARTURE

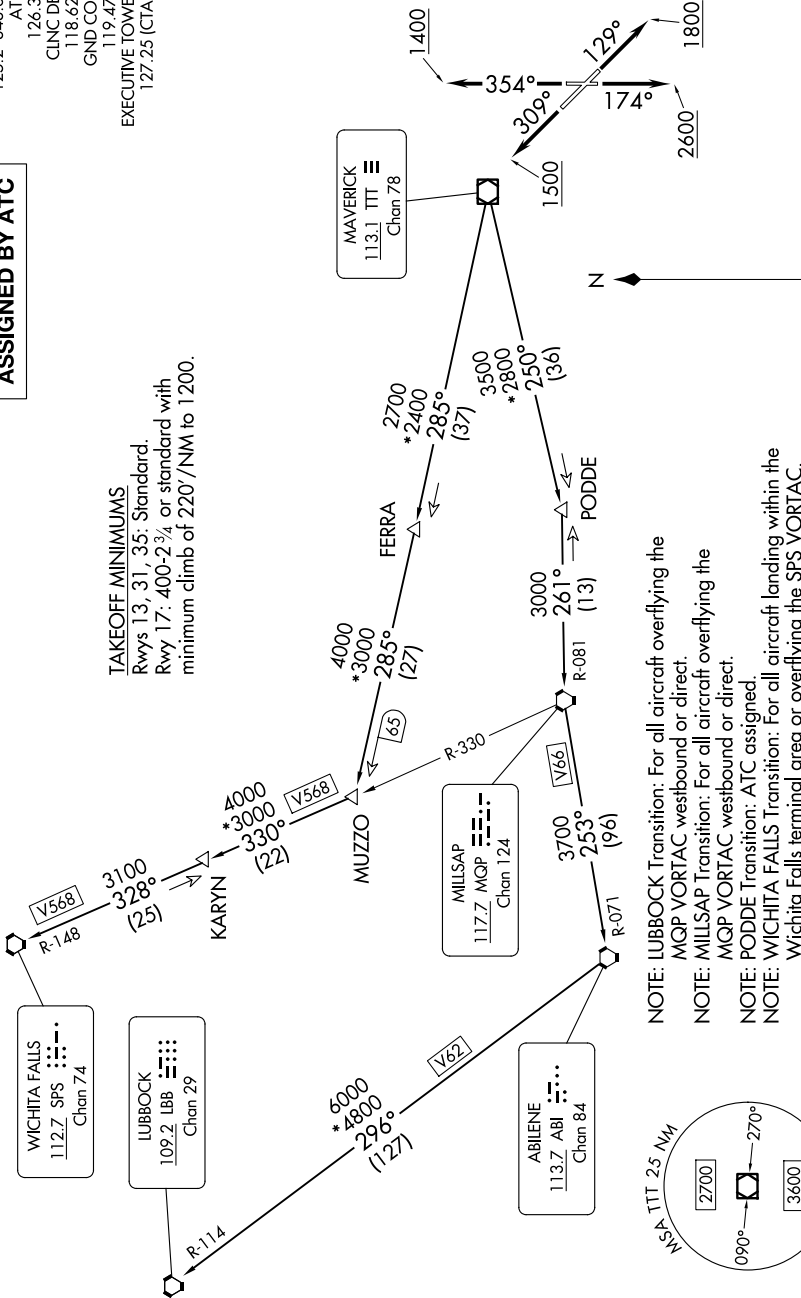
SC-2, 11 JUN 2026 to 09 JUL 2026

RADAR and DME required.

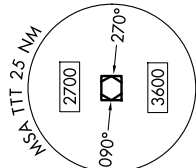
**TOP ALTITUDE:  
ASSIGNED BY ATC**

LONE STAR DEP CON  
125.2 343.65  
ATIS  
126.35  
CINC DEL  
118.625  
GND CON  
119.475  
EXECUTIVE TOWER\*  
127.25 (CTAF)

**TAKEOFF MINIMUMS**  
Rwys 13, 31, 35: Standard.  
Rwy 17: 400-2<sup>3</sup>/<sub>4</sub> or standard with  
minimum climb of 220'/NM to 1200.



- NOTE: LUBBOCK Transition: For all aircraft overlying the MQP VORTAC westbound or direct.
- NOTE: MILLSAP Transition: For all aircraft overlying the MQP VORTAC westbound or direct.
- NOTE: PODDE Transition: ATC assigned.
- NOTE: WICHITA FALLS Transition: For all aircraft landing within the Wichita Falls terminal area or overlying the SPS VORTAC.
- NOTE: For all aircraft requesting 17000 and below.



NOTE: Chart not to scale.

(CONTINUED ON FOLLOWING PAGE)

SC-2, 11 JUN 2026 to 09 JUL 2026

# KINGDOM FIVE DEPARTURE