

KUSSO THREE DEPARTURE (RNAV)

9200 N01 60 to 09 2026 N01 14 2-C-2

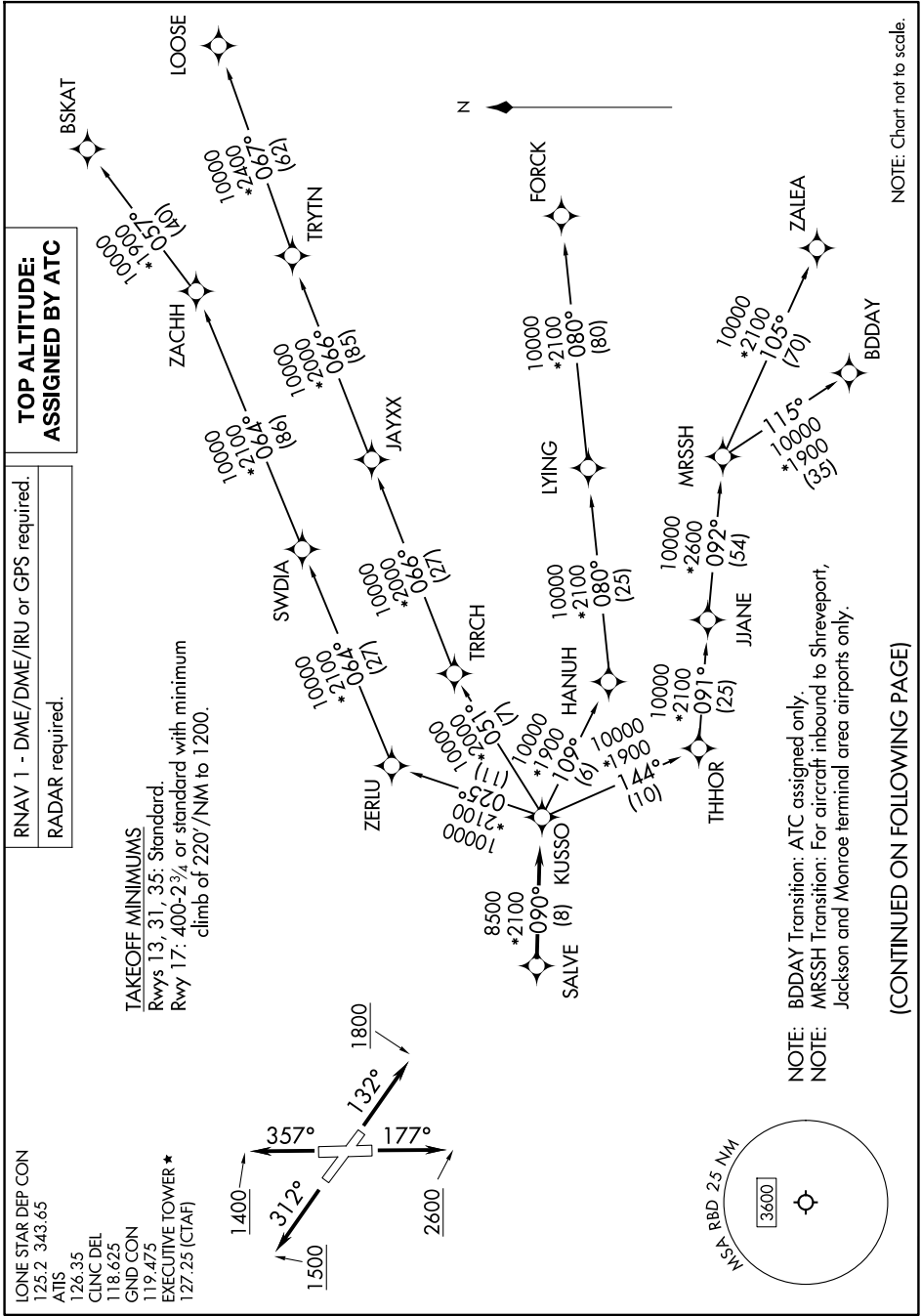
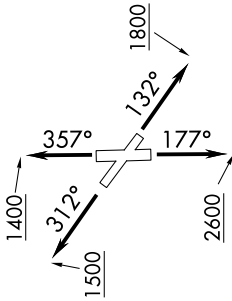
LONE STAR DEP CON
 125.2 343.65
 ATIS
 126.35
 CLNC DEL
 118.625
 GND CON
 119.475
 EXECUTIVE TOWER *
 127.25 (CTAF)

RNAV 1 - DME/DME/IRU or GPS required.
 RADAR required.

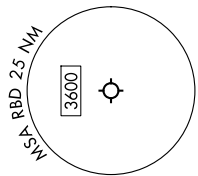
**TOP ALTITUDE:
ASSIGNED BY ATC**

TAKEOFF MINIMUMS

Rwys 13, 31, 35: Standard
 Rwy 17: 400-2³/₄ or standard with minimum
 climb of 220'/NM to 1200.



NOTE: BDDAY Transition: ATC assigned only.
 MRSSH Transition: For aircraft inbound to Shreveport,
 Jackson and Monroe terminal area airports only.



NOTE: Chart not to scale.

(CONTINUED ON FOLLOWING PAGE)

SC-2, 11 JUN 2026 to 09 JUL 2026

KUSSO THREE DEPARTURE (RNAV)