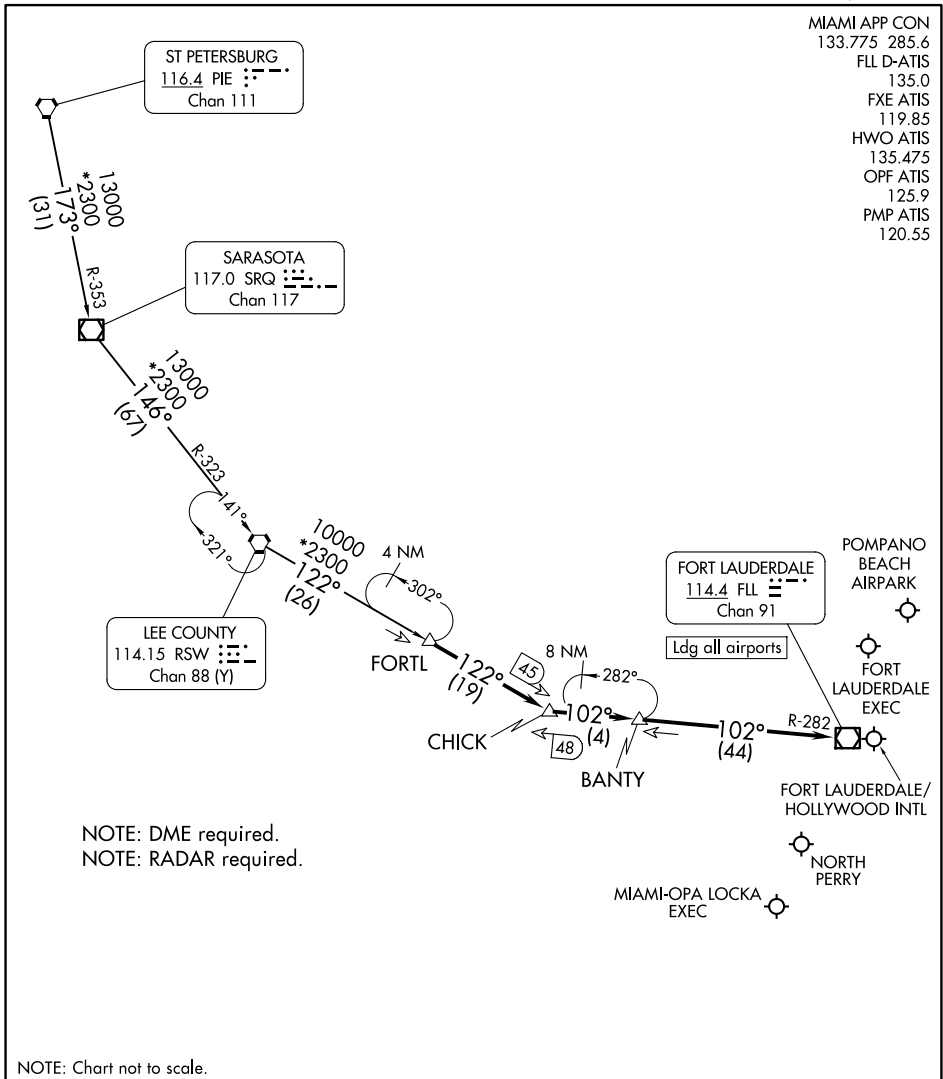


# FORTL NINE ARRIVAL

FORT LAUDERDALE, FLORIDA

MIAMI APP CON 133.775 285.6  
 FLL D-ATIS 135.0  
 FXE ATIS 119.85  
 HWO ATIS 135.475  
 OPF ATIS 125.9  
 PMP ATIS 120.55



SE-3, 11 JUN 2026 to 09 JUL 2026

SE-3, 11 JUN 2026 to 09 JUL 2026

NOTE: DME required.  
 NOTE: RADAR required.

NOTE: Chart not to scale.

## ARRIVAL ROUTE DESCRIPTION

**ST PETERSBURG TRANSITION (PIE.FORTL9):** From over PIE VORTAC on PIE R-173 and SRQ R-353 to SRQ VOR/DME, then on SRQ R-146 and RSW R-323 to RSW VORTAC, then on RSW R-122 to FORTL. Thence. . . .

**SARASOTA TRANSITION (SRQ.FORTL9):** From over SRQ VOR/DME on SRQ R-146 and RSW R-323 to RSW VORTAC, then on RSW R-122 to FORTL. Thence. . . .

**LANDING ALL AIRPORTS:** From FORTL on RSW R-122 to CHICK, then on FORT LAUDERDALE VOR/DME (FLL) R-282 to FLL VOR/DME. Expect RADAR vectors to final approach course.

# FORTL NINE ARRIVAL

FORT LAUDERDALE, FLORIDA