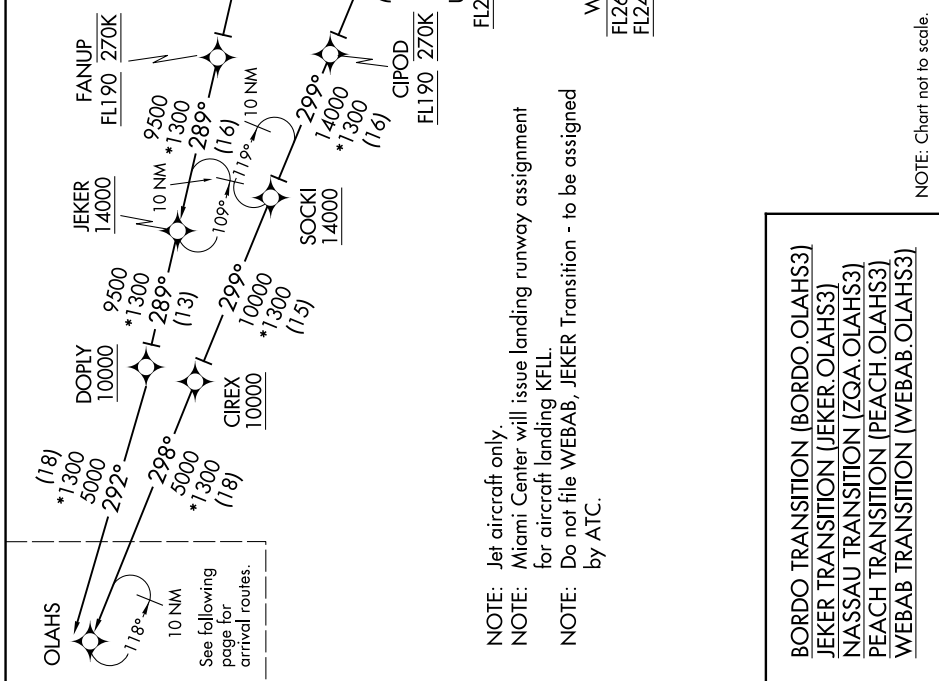


# OLAH3 THREE ARRIVAL (RNAV) Transition Routes FORT LAUDERDALE, FLORIDA

SE-3, 11 JUN 2026 to 09 JUL 2026

MIAMI APP CON  
 126.85 290.325 (6000' & above)  
 128.6 306.975 (5000' & below)  
 FLL D-ATIS  
 135.0  
 FXE ATIS  
 119.85  
 OPF ATIS  
 125.9  
 PMP ATIS  
 120.55

RNAV 1-DME/DME/IRU or GPS.  
 BORDO Transition: RNAV 1-GPS.  
 PEACH Transition: RNAV 1-GPS.  
 NASSAU Transition: RNAV 1-GPS.  
 RADAR required.



NOTE: Jet aircraft only.  
 NOTE: Miami Center will issue landing runway assignment for aircraft landing KFLI.  
 NOTE: Do not file WEBAB, JEKER Transition - to be assigned by ATC.

BORDO TRANSITION (BORDO.OLAH33)  
 JEKER TRANSITION (JEKER.OLAH33)  
 NASSAU TRANSITION (ZQA.OLAH33)  
 PEACH TRANSITION (PEACH.OLAH33)  
 WEBAB TRANSITION (WEBAB.OLAH33)

NOTE: Chart not to scale.

(CONTINUED ON FOLLOWING PAGE)

SE-3, 11 JUN 2026 to 09 JUL 2026

# OLAH3 THREE ARRIVAL (RNAV) Transition Routes FORT LAUDERDALE, FLORIDA