

(TARPN.TARPN3) 25107

# TARPN THREE ARRIVAL (RNAV)

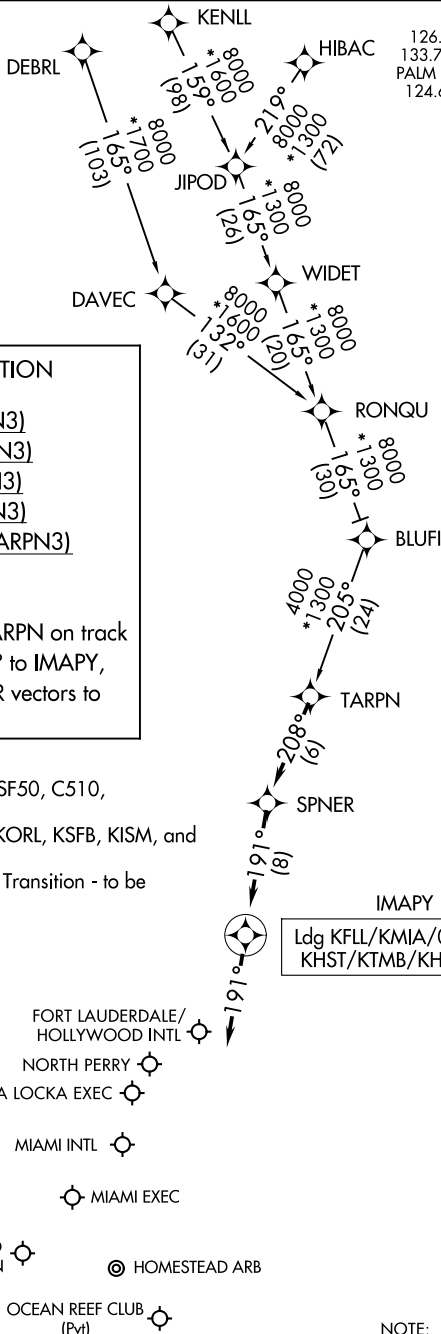
AL-744 (FAA)

FORT LAUDERDALE, FLORIDA

RNAV 1 - DME/DME/IRU or GPS.

RADAR required.

MIAMI APP CON 126.05 251.1 (9000)  
 133.775 371.9 (7000)  
 PALM BEACH APP CON 124.6 317.4 (12000)  
 FLL D-ATIS 135.0  
 HWO ATIS 135.475  
 KHST ATIS \* 132.275 269.9  
 MIA D-ATIS 119.15  
 OPF ATIS 125.9  
 TMB ATIS 124.0  
 X51 AWOS-3 118.375



## ARRIVAL ROUTE DESCRIPTION

- DEBRL TRANSITION (DEBRL.TARPN3)
- HIBAC TRANSITION (HIBAC.TARPN3)
- JIPOD TRANSITION (JIPOD.TARPN3)
- KENLL TRANSITION (KENLL.TARPN3)
- RONQU TRANSITION (RONQU.TARPN3)

LANDING ALL AIRPORTS: From TARPN on track 208° to SPNER, then on track 191° to IMAPY, then on track 191°. Expect RADAR vectors to final approach course.

- NOTE: Turboprop and EA50, E50P, SF50, C510, and C525 aircraft only.
- NOTE: JIPOD Transition for KMCO, KORL, KSFB, KISM, and KLEE departures only.
- NOTE: Do not file DEBRL or RONQU Transition - to be assigned by ATC.

Ldg KFLL/KMIA/O7FA/X51/KHST/KTMB/KHWO/KOPF

- FORT LAUDERDALE/HOLLYWOOD INTL
- NORTH PERRY
- MIAMI-OPA LOCKA EXEC
- MIAMI INTL
- MIAMI EXEC
- MIAMI HOMESTEAD GENERAL AVIATION
- HOMESTEAD ARB
- OCEAN REEF CLUB (Pvt)

NOTE: Chart not to scale.

# TARPN THREE ARRIVAL (RNAV)

(TARPN.TARPN3) 19MAY22

FORT LAUDERDALE, FLORIDA

SE-3, 11 JUN 2026 to 09 JUL 2026

SE-3, 11 JUN 2026 to 09 JUL 2026