

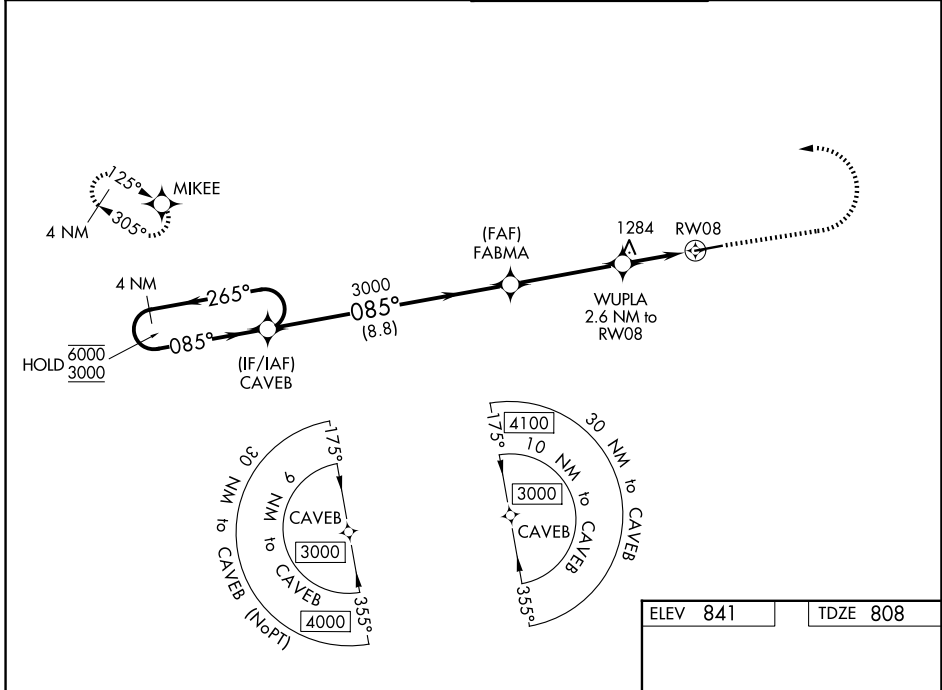
WAAS CH 65804 W08A	APP CRS 085°	Rwy Ldg TDZE Apt Elev	5797 808 841
--	------------------------	-----------------------------	---

RNAV (GPS) Y RWY 8

FULTON COUNTY EXEC/CHARLIE BROWN FLD (F'TY)

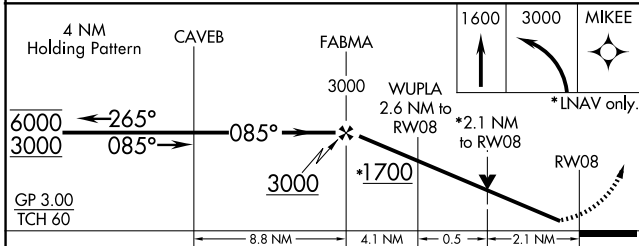
RNP APCH - GPS.	MALSRL 	MISSED APPROACH: Climb to 1600 then climbing left turn to 3000 direct MIKEE and hold.
<p>⚠ Rwy 8 helicopter visibility reduction below 3/4 SM NA. For uncompensated Baro-VNAV systems, LNAV/VNAV NA below -11°C or above 54°C. For inop ALS, increase LNAV/VNAV all Cats visibility to 2 1/2 SM and LNAV Cat C/D to 2 SM. Ridge with trees to 1299' MSL between FAF and runway threshold may be obscured by clouds even with airfield ceiling at or above procedure minimums.</p>		

ATIS 120.175	ATLANTA APP CON 121.0 268.7	FULTON COUNTY TOWER 118.45 257.8	GND CON 121.7 348.6
------------------------	---------------------------------------	--	-------------------------------

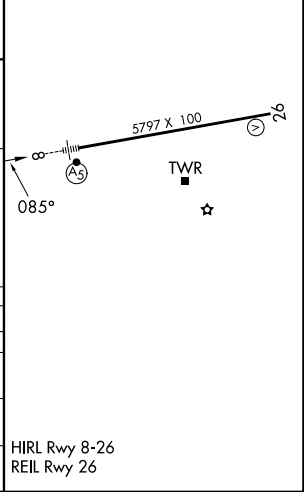


SE-4, 11 JUN 2026 to 09 JUL 2026

SE-4, 11 JUN 2026 to 09 JUL 2026



ELEV 841	TDZE 808
----------	----------



CATEGORY	A	B	C	D
LPV DA		1058-1/2	250 (300-1/2)	
LNAV/VNAV DA		1637-17/8	829 (800-17/8)	
LNAV MDA	1540-1/2	732 (700-1/2)	1540-15/8	732 (700-15/8)
CIRCLING	1540-1	699 (700-1)	1740-23/4 899 (900-23/4)	1740-3 899 (900-3)