

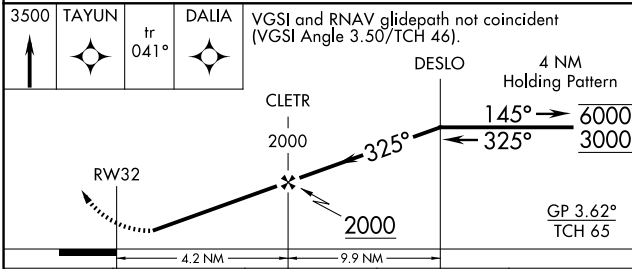
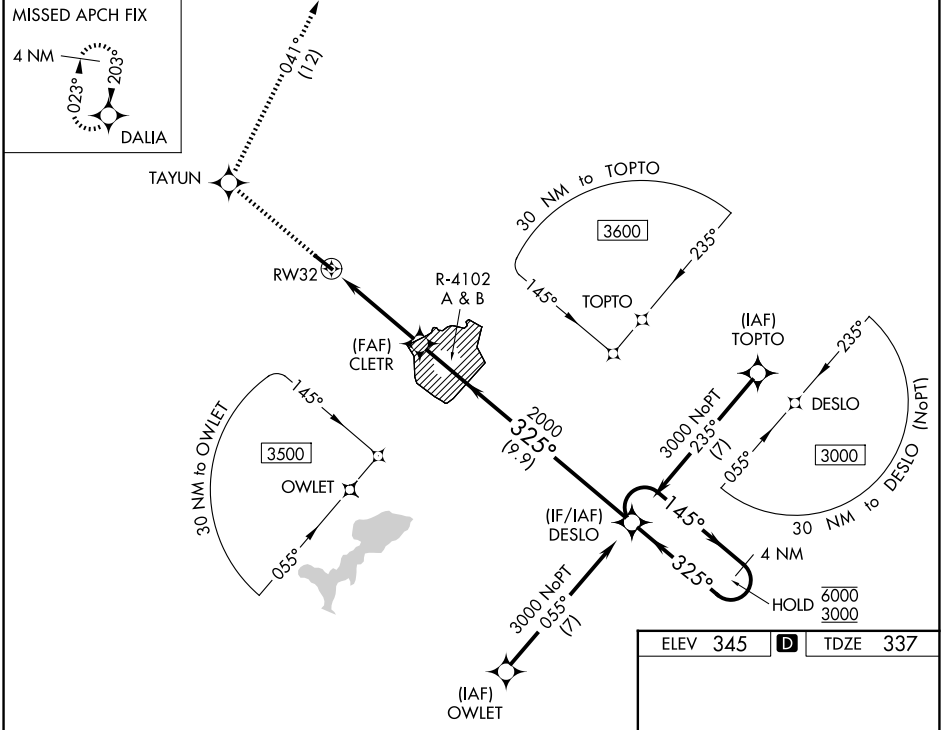
WAAS CH <b>48944</b> <b>W32A</b>	APP CRS <b>325°</b>	Rwy Ldg <b>4538</b> TDZE <b>337</b> Apt Elev <b>345</b>
--	------------------------	---

# RNAV (GPS) RWY 32

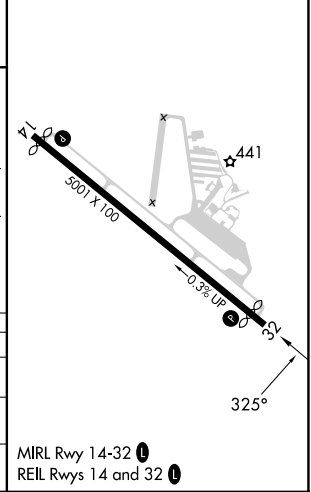
FITCHBURG MUNI (FIT)

RNP APCH - GPS.		MISSED APPROACH: Climb to 3500 direct TAYUN and on track 041° to DALIA and hold.	
<p>▼ Rwy 32 helicopter visibility reduction below 1 SM NA.          ▲ Procedure NA when R-4102 A &amp; B are active.          ❄️ -21°C Circling NA southwest of Rwy 14-32 at night.</p>			

ASOS <b>135.175</b>	BOSTON APP CON <b>124.4 279.6</b>	UNICOM <b>122.7</b> (CTAF)	<b>123.0</b> <b>0</b>
------------------------	--------------------------------------	-------------------------------	-----------------------



ELEV <b>345</b>	<b>D</b>	TDZE <b>337</b>
-----------------	----------	-----------------



CATEGORY	A	B	C	D
LPV DA	773-1¼		436 (500-1¼)	NA
LNVA MDA	960-1	623 (700-1)	960-1¼ 623 (700-1¼)	NA
CIRCLING	1080-1 735 (800-1)	1380-1½ 1035 (1100-1½)	1520-3 1175 (1200-3)	NA

MIRL Rwy 14-32 **0**  
REIL Rwy 14 and 32 **0**

NE-1, 11 JUN 2026 to 09 JUL 2026

NE-1, 11 JUN 2026 to 09 JUL 2026