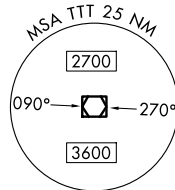


# JOE POOL EIGHT DEPARTURE

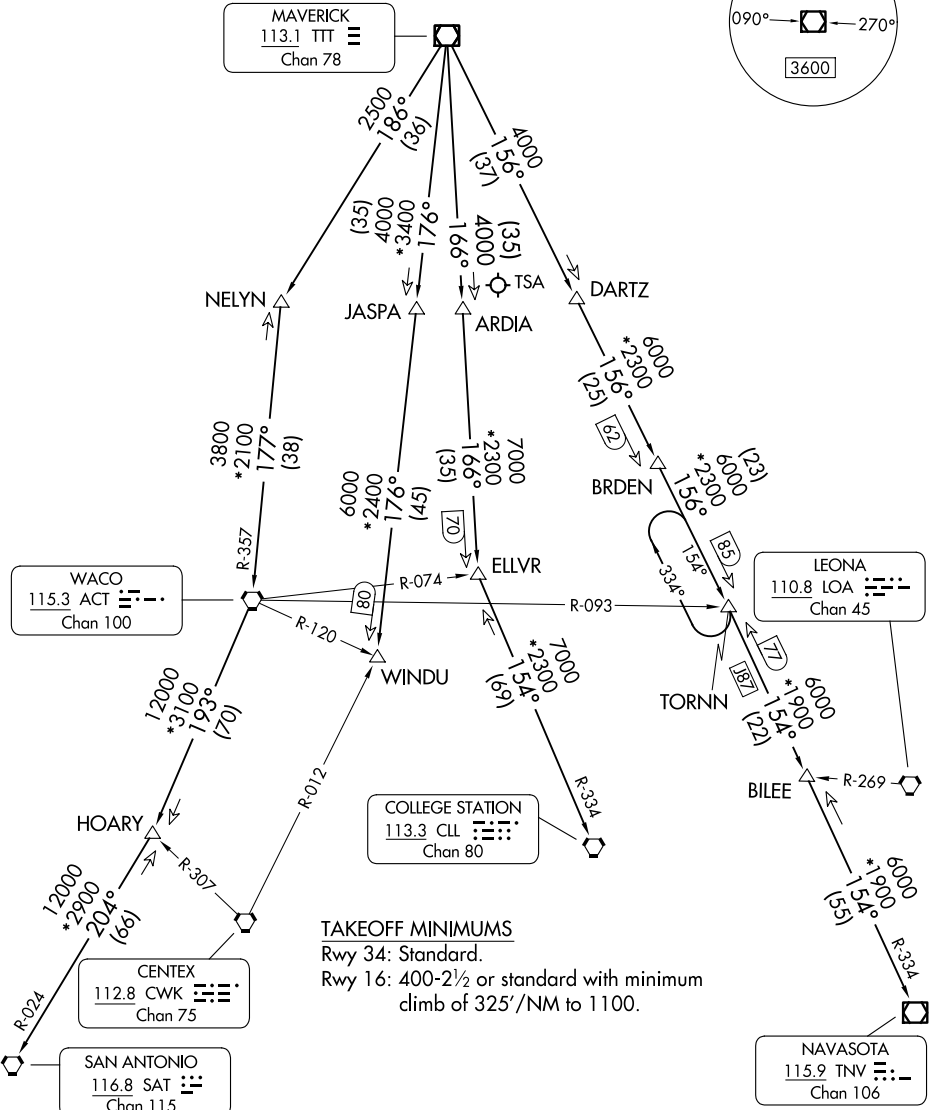
LONE STAR DEP CON  
124.3 282.275  
ATIS  
133.4  
CLNC DEL  
119.55  
GND CON  
121.6  
ADDISON TOWER\*  
126.0 (CTAF) 239.0

RADAR and DME required.

**TOP ALTITUDE:  
ASSIGNED BY ATC**



**MAVERICK**  
113.1 TTT  
Chan 78



### TAKEOFF MINIMUMS

Rwy 34: Standard.

Rwy 16: 400-2½ or standard with minimum climb of 325'/NM to 1100.

(CONTINUED ON FOLLOWING PAGE)

NOTE: Chart not to scale.

# JOE POOL EIGHT DEPARTURE

SC-2, 11 JUN 2026 to 09 JUL 2026

SC-2, 11 JUN 2026 to 09 JUL 2026