

NANDR FOUR DEPARTURE (RNAV)

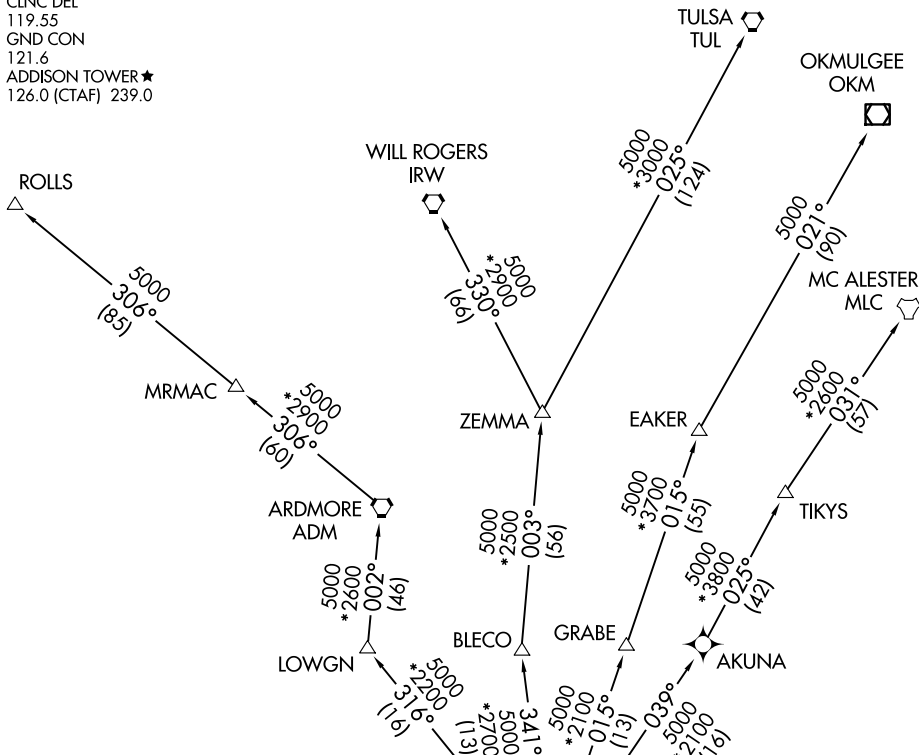
DALLAS, TEXAS

LONE STAR DEP CON
124.3 282.275
ATIS
133.4
CLNC DEL
119.55
GND CON
121.6
ADDISON TOWER ★
126.0 (CTAF) 239.0

RNAV 1 - DME/DME/IRU or GPS required.

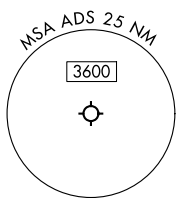
RADAR required.

**TOP ALTITUDE:
ASSIGNED BY ATC**



TAKEOFF MINIMUMS

Rwy 34: Standard.
Rwy 16: 400-2½ or standard with minimum climb of 325'/NM to 1100.



NOTE: EAKER Transition: For TUL terminal arrivals only.
NOTE: TULSA Transition: For all aircraft overflying TUL VORTAC.
NOTE: Aircraft arriving to the Oklahoma City terminal area, file and expect the ZEMMA enroute transition.

NOTE: Chart not to scale.

(CONTINUED ON FOLLOWING PAGE)

NANDR FOUR DEPARTURE (RNAV)

(NANDR4.NANDR) 14MAY26

DALLAS, TEXAS
ADDISON (ADS)

SC-2, 11 JUN 2026 to 09 JUL 2026

SC-2, 11 JUN 2026 to 09 JUL 2026