

SWVAY FOUR ARRIVAL (RNAV)

DALLAS, TEXAS

SC-2, 11 JUN 2026 to 09 JUL 2026

LONE STAR APP CON
135.975 379.9
ADS ATIS
133.4
DAL D-ATIS
120.15
FWS ATIS
120.025
RBD ATIS
124.35
TKI ATIS
119.925

NOTE: RADAR required.

NOTE: RNAV 1.

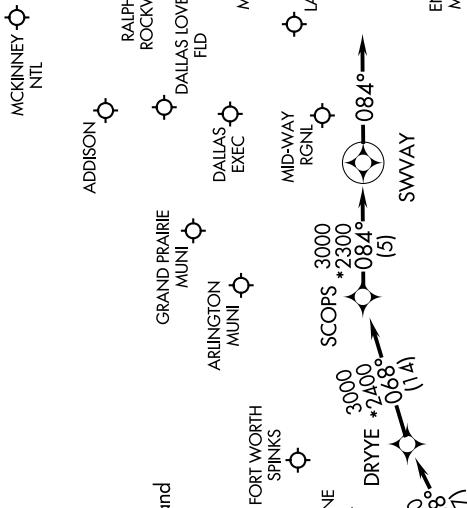
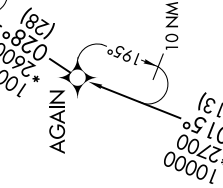
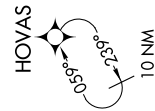
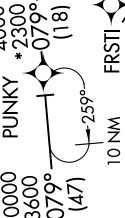
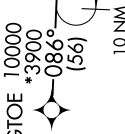
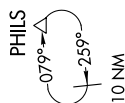
NOTE: DME/DME/IRU or GPS required.

NOTE: DAL ARRIVALS: Props only. Turbojet aircraft file and expect the BACHR or DRYYE RNAV STARS.

NOTE: Props exempt from speed restriction at KNEAD.

NOTE: When DFW is in south flow, turbojets expect to cross KNEAD at 10000.

NOTE: When DFW is in north flow, turbojets expect to cross KNEAD at 12000.



ARRIVAL ROUTE DESCRIPTION

BGTOE TRANSITION (BGTOE.SWVAY4)

DITSY TRANSITION (DITSY.SWVAY4)

FRSTI TRANSITION (FRSTI.SWVAY4): (For ACT and GRK Terminal Area departures only).

SHILLY TRANSITION (SHILLY.SWVAY4): (For ABI Terminal Area departures only).

From KNEAD on track 058° to DRYYE, then on track 068° to SCOPS, then on track 084° to SWVAY, then on track 084°. Expect RADAR vectors to final approach course.

SWVAY FOUR ARRIVAL (RNAV)

(KNEAD.SWVAY4) 26MAY16

DALLAS, TEXAS

SC-2, 11 JUN 2026 to 09 JUL 2026

NOTE: Chart not to scale.