

MARYSVILLE, CALIFORNIA

HI-ILS or LOC Z RWY 15

LOC I-BAB 109.5	APCH CRS 145°	Rwy ldg TDZE Arprt Elev	12,001 113 113
---------------------------	-------------------------	-------------------------------	---

- (USAF)

BEALE AFB (KBAB)

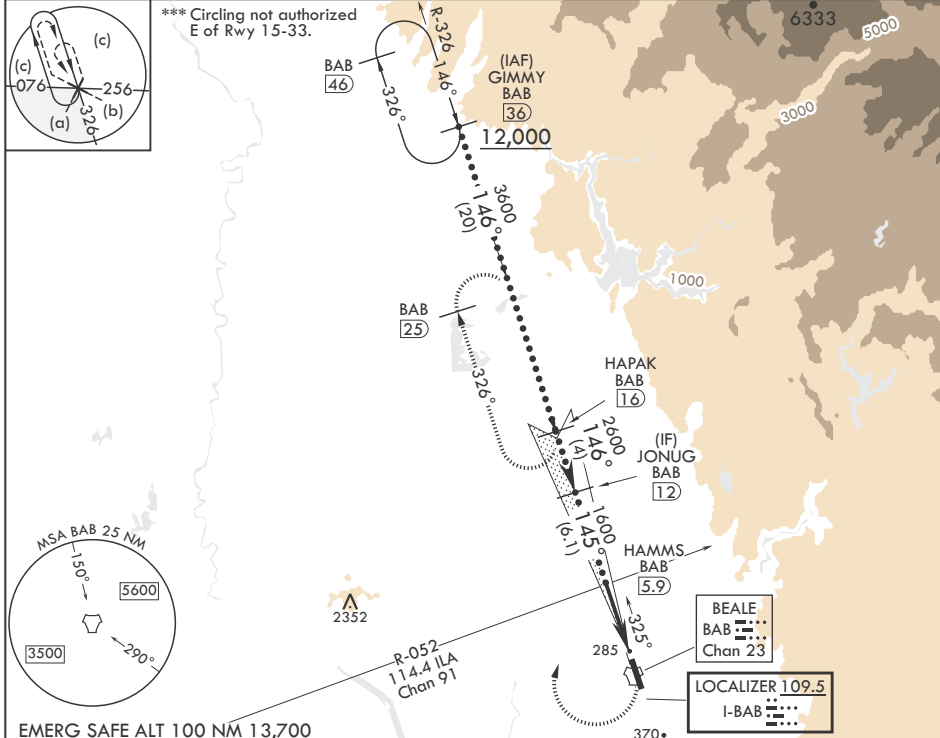
RADAR or DME required

ALSF-1

MISSED APPROACH: Climb to to 700 on heading 145°, then climbing right turn to 4400 heading 011° to intercept BAB R-326 to HAPAK and hold, continue climb in hold to 4400.

▼ * When ALS inop, increase CAT CDE RVR to 40 and vis to 3/4 mile.
** When ALS inop, increase CAT CDE vis to 1 3/8 miles.

ATIS* 124.55 273.5	NORCAL APP CON 125.4 259.1	TOWER* 119.4 284.75	GND CON 121.6 257.75
------------------------------	--------------------------------------	-------------------------------	--------------------------------



EMERG SAFE ALT 100 NM 13,700

JONUG BAB (12)	VGSI and glideslope not coincident. (VGSI Angle 2.75/TCH 53)	700	4400	hdg 011°	BAB R-326	ELEV 113	TDZE 113
2600	HAMMS BAB (5.9) ILA R-052	1600	145°	BAB (2.5)	BAB TACAN	145°	BCN 240
GS 2.75° TCH 47				BAB HEGOP (1.5)			TWR 274
				4.5 NM	0.5		
CATEGORY	C	D	E				
S-ILS 15*	313/24	200	(200-½)				
S-LOC 15**	600/50	487	(500-1)				
☐ CIRCLING***	600-1½ 487 (500-1½)	800-2¼ 687 (700-2¼)	800-2½ 687 (700-2½)				

HIRL all Rwys

MARYSVILLE, CALIFORNIA

39°08'N - 121°26'W

BEALE AFB (KBAB)

Amdt 6 25JAN24

HI-ILS or LOC Z RWY 15

SW-2, 11 JUN 2026 to 09 JUL 2026

SW-2, 11 JUN 2026 to 09 JUL 2026