

MARYSVILLE, CALIFORNIA

# HI-ILS or LOC Z RWY 33

LOC I-MIZ <b>109.5</b>	APCH CRS <b>325°</b>	Rwy ldg 12,001	TDZE 105
		Arprt Elev 113	

-(USAF)

BEALE AFB (KBAB)

RADAR or DME required

▲ \* When ALS inop, increase CAT CDE RVR to 40 and vis to 3/4 mile.  
 \*\* When ALS inop, increase CAT CDE RVR to 60 vis to 1 1/8 miles.

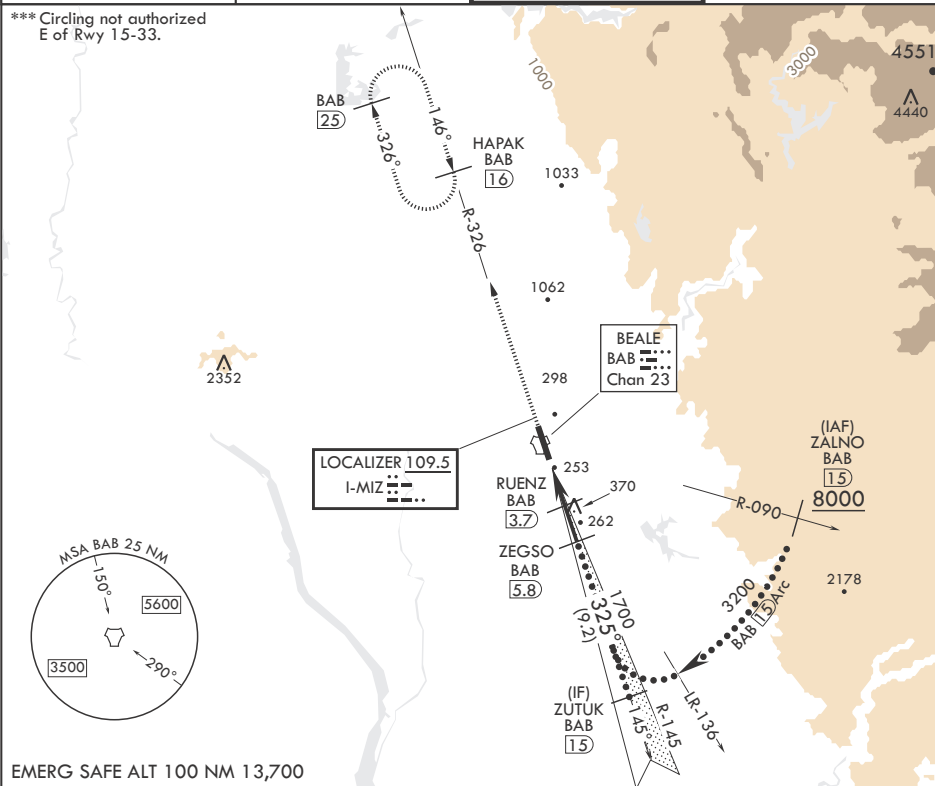
ALSF-1



MISSED APPROACH: Climb to 3600 intercept BAB R-326 to HAPAK and hold.

ATIS* <b>124.55 273.5</b>	NORCAL APP CON <b>125.4 259.1</b>	TOWER* <b>119.4 284.75</b>	GND CON <b>121.6 257.75</b>
------------------------------	--------------------------------------	-------------------------------	--------------------------------

\*\*\* Circling not authorized E of Rwy 15-33.



EMERG SAFE ALT 100 NM 13,700

3600 BAB R-326	HAPAK BAB 16	ZUTUK R-145 BAB 15	ZALNO R-090 BAB 15	ELEV 113	TDZE 105
BAB TACAN	ZAPUX BAB 1.5	BAB 2.1	RUENZ BAB 3.7	ZEGSO BAB 5.8	GS 3.00° TCH 50
0.5		2.2 NM		2.1 NM	
CATEGORY	C	D	E		
S-ILS 33*	305/24	200	(200-1/2)		
S-LOC 33**	520/40	415	(500-3/4)		
▲ CIRCLING***	600-1 1/2 487 (500-1 1/2)	800-2 1/4 687 (700-2 1/4)	800-2 1/2 687 (700-2 1/2)	HIRL all Rwys	

MARYSVILLE, CALIFORNIA

39°08'N - 121°26'W

BEALE AFB (KBAB)

Amdt 6 25JAN24

# HI-ILS or LOC Z RWY 33

SW-2, 11 JUN 2026 to 09 JUL 2026

SW-2, 11 JUN 2026 to 09 JUL 2026