

MARYSVILLE, CALIFORNIA

RNAV (GPS) RWY 15

APCH CRS	Rwy Idg	12,001
145°	THRE	113
	Arprt Elev	113

-(USAF)

BEALE AFB (KBAB)

RNP APCH

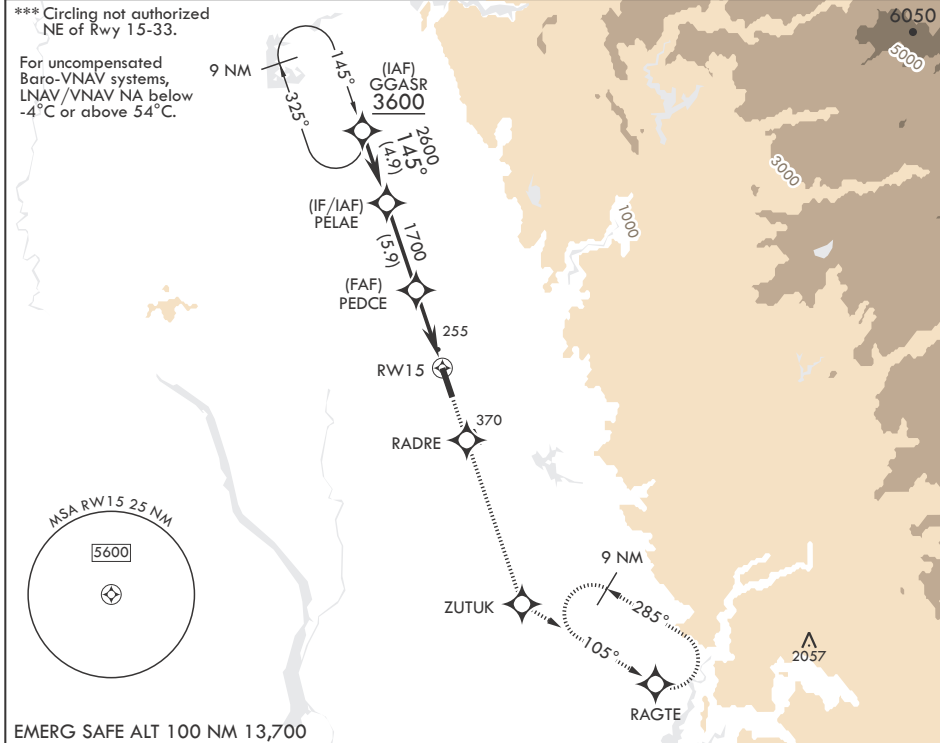
▼ * When ALS inop, increase RVR to 60, vis to 1 1/8 miles.
 ** When ALS inop, increase CAT AB RVR to 55 and vis to 1 mile;
 CAT CDE vis to 1 3/8 miles.

ALSf-1



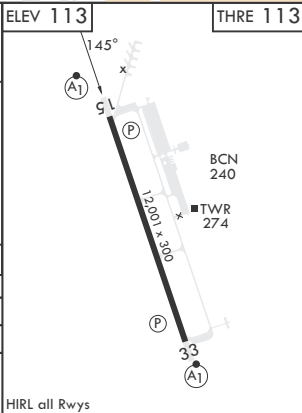
MISSED APPROACH: Climb to 3600 direct RADRE, track 145° to ZUTUK, track 105° to RAGTE and hold, continue climb-in-hold to 3600.

ATIS★	NORCAL APP CON	TOWER★	GND CON
124.55 273.5	125.4 259.1	119.4 284.75	121.6 257.75



EMERG SAFE ALT 100 NM 13,700

PELAE	VGSi and RNAV glidepath not coincident (VGSi Angle 2.75/TCH 53).				3600	RADRE	tr 145°	ZUTUK	ELEV 113	THRE 113
2600	145°									
GP 2.75°	1700				1.5 NM to RWY 15					
TCH 47	5.3 NM									
CATEGORY	A	B	C	D	E					
LNAV/VNAV DA*	530/40		417		(500-¾)					
LNAV MDA**	600/24	487 (500-½)	600/50		487 (500-1)					
☐ CIRCLING***	600-1 487 (500-1)		600-1½ 487 (500-½)	800-2¼ 687 (700-2¼)	800-2½ 687 (700-2½)					



HIRL all Rwys

MARYSVILLE, CALIFORNIA

39°08'N - 121°26'W

BEALE AFB (KBAB)

Amdt 2 25JAN24

RNAV (GPS) RWY 15

SW-2, 11 JUN 2026 to 09 JUL 2026

SW-2, 11 JUN 2026 to 09 JUL 2026