

LOC/DME I-FVL 110.75 Chan 44 (Y)	APP CRS 011°	Rwy Ldg TDZE 9500 1017 Apt Elev 1027
---	------------------------	--

ILS RWY 1R (CAT II & III)

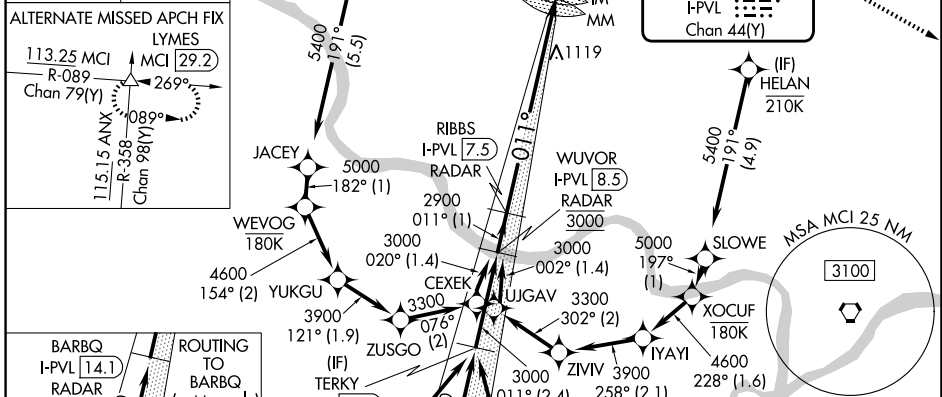
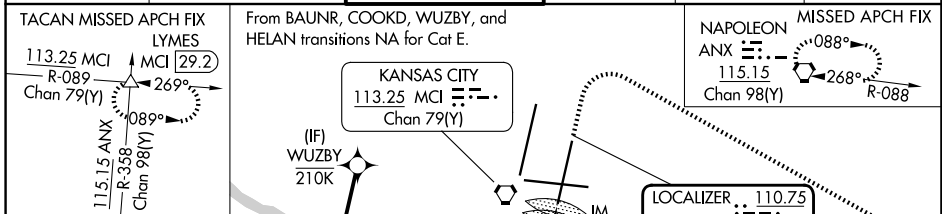
KANSAS CITY INTL (MCI)

RNP APCH - GPS. From BAUNR or COOKD or WUZBY or HELAN.
 DME or RADAR required. RADAR required for procedure entry at SPICY.

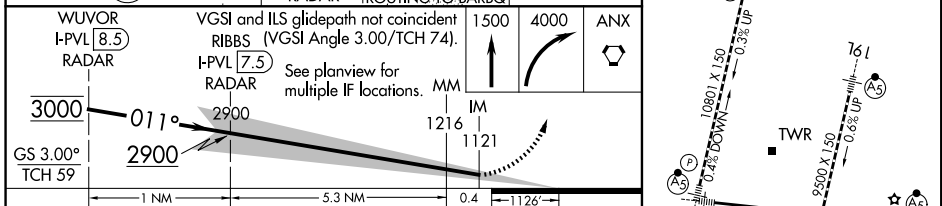
ALSF-2 (A) MISSED APPROACH: Climb to 1500 then climbing right turn to 4000 direct ANX VORTAC and hold. (TACAN aircraft)
 Climb to 1500 then climbing right turn to 4000 on heading 130° and MCI R-089 to LYMES INT/MCI 29.2 DME and hold.

Simultaneous approach authorized except from BAUNR, COOKD, WUZBY, and HELAN. CAT II: RVR 1000 authorized with specific OPSPEC, MSPEC, or LOA approval and use of autoland or HUD to touchdown.

D-ATIS 128.375	KANSAS CITY APP CON 120.95 318.1	INTERNATIONAL TOWER 128.2 254.25	GND CON 121.8	CLNC DEL 135.7	CPDLC
--------------------------	--	--	-------------------------	--------------------------	-------



ELEV 1027	TDZE 1017
-----------	-----------



CATEGORY	A	B	C	D	E
S-ILS 1R	CAT II RA 111/12 100 DA 1117				
S-ILS 1R	CAT III RVR 06				

CATEGORY II & III ILS - SPECIAL AIRCREW & AIRCRAFT CERTIFICATION REQUIRED

NC-3, 11 JUN 2026 to 09 JUL 2026

NC-3, 11 JUN 2026 to 09 JUL 2026