

LOC/DME I-PVL <b>110.75</b> Chan 44(Y)	APP CRS <b>011°</b>	Rwy Ldg TDZE <b>9500</b> <b>1017</b> Apt Elev <b>1027</b>
--	------------------------	--

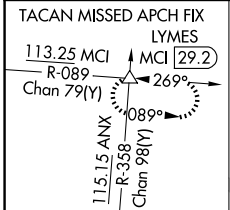
# ILS RWY 1R (SA CAT I)

## KANSAS CITY INTL (MCI)

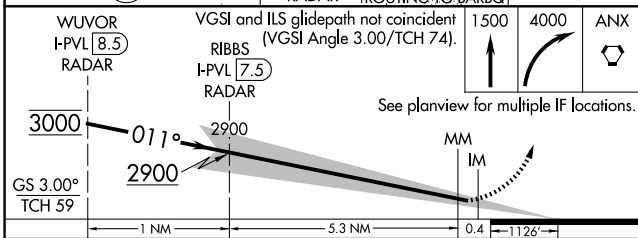
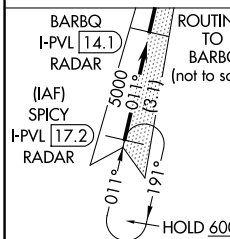
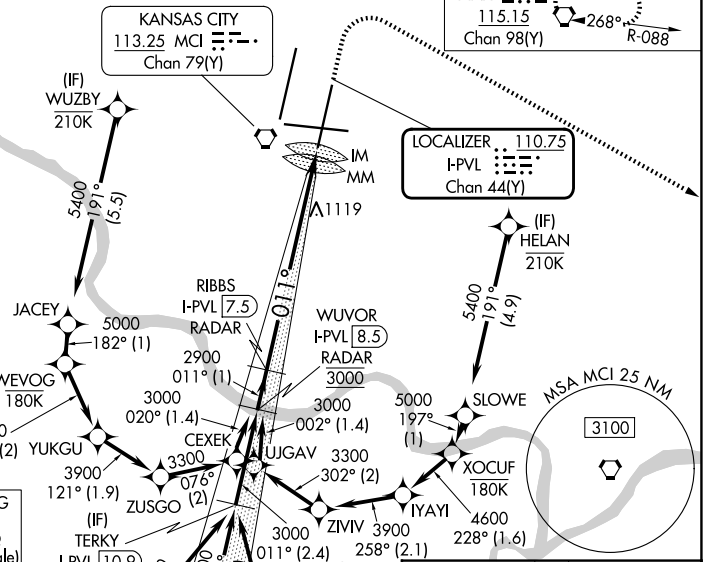
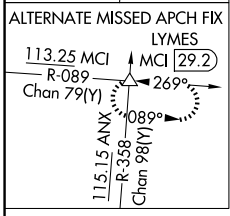
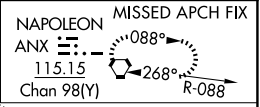
RNP APCH - GPS. From BAUNR or COOKD or WUZBY or HELAN.  
 DME or RADAR required. RADAR required for procedure entry at SPICY.  
 Requires specific OPSPEC, MSPEC, or LOA approval. Simultaneous approach authorized except from BAUNR, COOKD, WUZBY, and HELAN.

ALSF-2  
 MISSED APPROACH: Climb to 1500 then climbing right turn to 4000 direct ANX VORTAC and hold. (TACAN aircraft) Climb to 1500 then climbing right turn to 4000 on heading 130° and MCI R-089 to LYMES INT/ MCI 29.2 DME and hold.

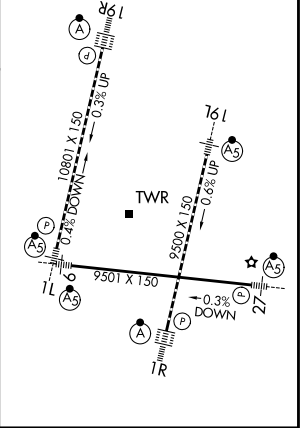
D-ATIS <b>128.375</b>	KANSAS CITY APP CON <b>120.95 318.1</b>	INTERNATIONAL TOWER <b>128.2 254.25</b>	GND CON <b>121.8</b>	CLNC DEL <b>135.7</b>	CPDLC
--------------------------	--	--	-------------------------	--------------------------	-------



From BAUNR, COOKD, WUZBY, and HELAN transitions NA for Cat E.



ELEV 1027	TDZE 1017
TDZ/CL Rwys 1L, 1R, 19L and 19R	
HIRL all Rwys	



CATEGORY	A	B	C	D	E
S-ILS 1R	RA 161/14 150 DA 1167				
<b>SA CATEGORY I ILS - SPECIAL AIRCREW &amp; AIRCRAFT CERTIFICATION REQUIRED</b>					

NC-3, 11 JUN 2026 to 09 JUL 2026

NC-3, 11 JUN 2026 to 09 JUL 2026