

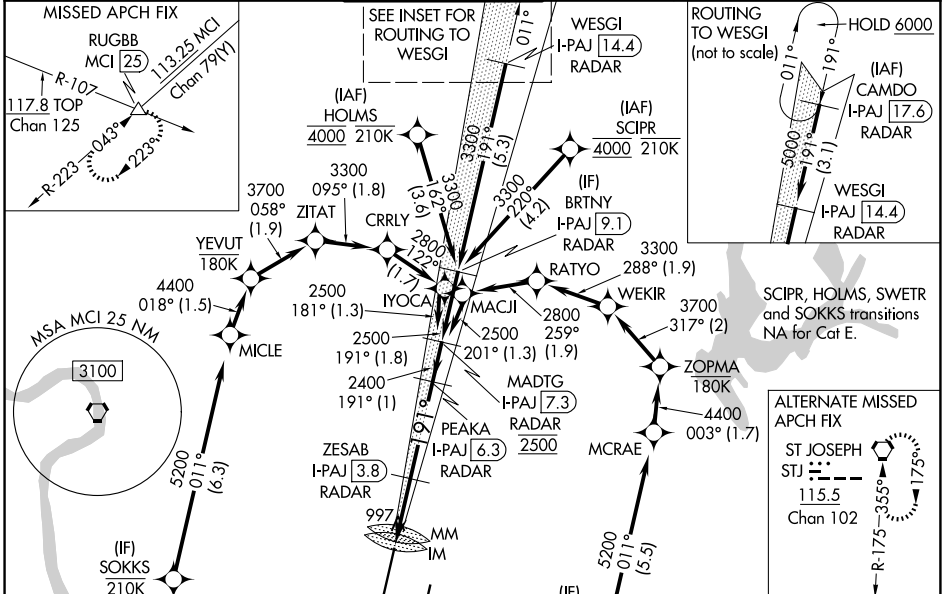
LOC/DME I-PAJ 109.1 Chan 28	APP CRS 191°	Rwy Ldg 10801 TDZE 991 Apt Elev 1027
--	------------------------	--

ILS or LOC RWY 19R

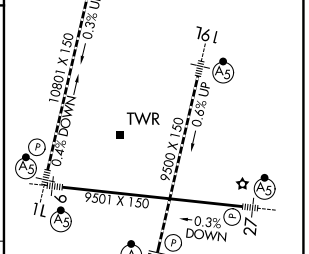
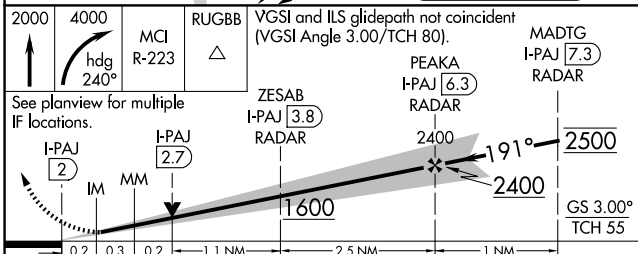
KANSAS CITY INTL (MCI)

RNP APCH - GPS. From SCIPR or HOLMS or SWETR or SOKKS.	ALSF-2 	MISSED APPROACH: Climb to 2000 then climbing right turn to 4000 on heading 240° and MCI VORTAC R-223 to RUGBB INT/MCI 25 DME and hold.
DME or RADAR required. RADAR required for procedure entry at CAMDO.		
For inop ALS, increase S-ILS 19R Cat E visibility to RVR 4000 and S-LOC 19R Cat C/D/E to RVR 4500. Simultaneous approach authorized except from SCIPR, HOLMS, SOKKS and SWETR.		

D-ATIS 128.375	KANSAS CITY APP CON 120.95 318.1	INTERNATIONAL TOWER 128.2 254.25	GND CON 121.8	CLNC DEL 135.7	CPDLC
--------------------------	--	--	-------------------------	--------------------------	-------



ELEV 1027	D TDZE 991



2000	4000	MCI RUGBB	VGS1 and ILS glidepath not coincident (VGS1 Angle 3.00/TCH 80).		MADTG		
		hdg 240°	A	B	C	D	E
See planview for multiple IF locations.							
CATEGORY			A	B	C	D	E
S-ILS 19R			1191/18 200 (200-½)				
S-LOC 19R			1280/24 289 (300-½)				
CIRCLING	1540-1	513 (600-1)	1540-1½	1580-2	553 (600-2)		
			513 (600-1½)				

HIRL all Rwy's					
TDZ/CL Rwy's 1L, 1R, 19L and 19R					
FAF to MAP 4.3 NM					
Knots	60	90	120	150	180
Min:Sec	4:18	2:52	2:09	1:43	1:26

NC-3, 11 JUN 2026 to 09 JUL 2026

NC-3, 11 JUN 2026 to 09 JUL 2026