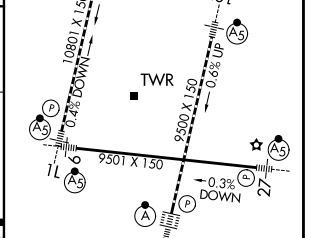
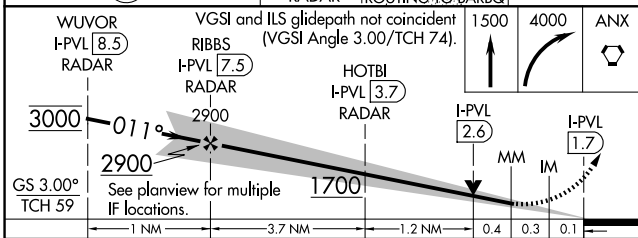
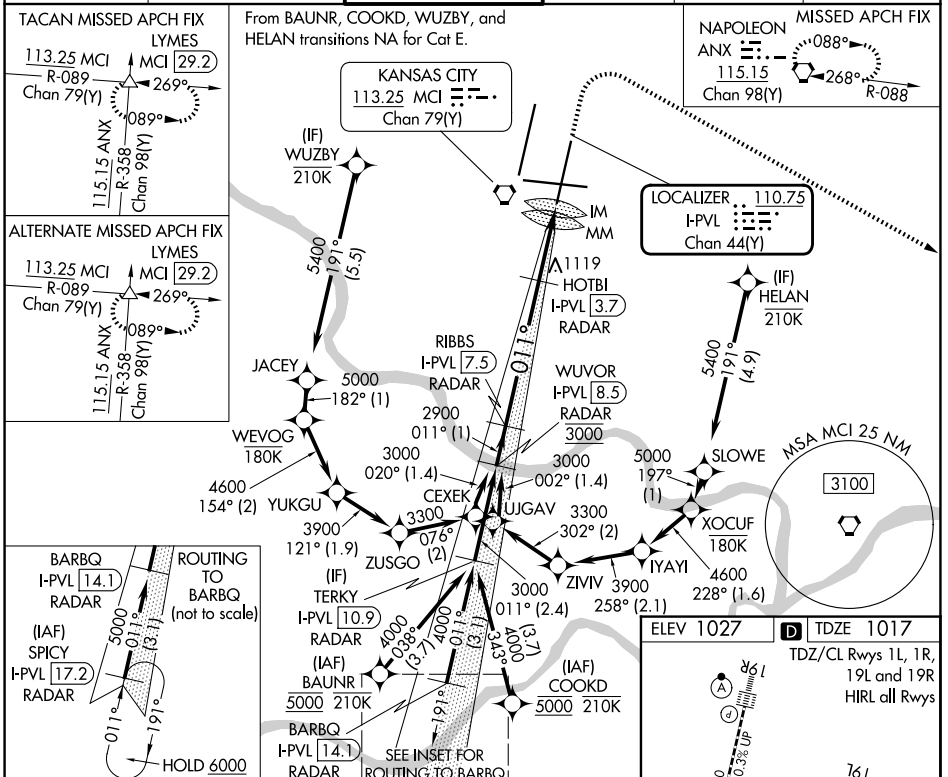


| | | |
|---|------------------------|--|
| LOC/DME I-PVL 110.75 Chan 44 (Y) | APP CRS 011° | Rwy Ldg TDZE 9500 1017 Apt Elev 1027 |
|---|------------------------|--|

ILS or LOC RWY 1R

KANSAS CITY INTL (MCI)

| | | | | | |
|---|--|--|--|--------------------------|-------|
| RNP APCH - GPS. From BAUNR or COOKD or WUZBY or HELAN. | | ALS-F2 | MISSED APPROACH: Climb to 1500 then climbing right turn to 4000 direct ANX VORTAC and hold. (TACAN aircraft) Climb to 1500 then climbing right turn to 4000 on heading 130° and MCI R-089 to LYMES INT/ MCI 29.2 DME and hold. | | |
| DME or RADAR required. RADAR required for procedure entry at SPICY. | | | | | |
| <p>▼ For inop ALS, increase S-ILS 1R Cat E visibility to RVR 4000 and S-LOC 1R Cat C/D/E visibility to RVR 5500. Simultaneous approach authorized except from BAUNR, COOKD, WUZBY, and HELAN.</p> | | | | | |
| D-ATIS 128.375 | KANSAS CITY APP CON 120.95 318.1 | INTERNATIONAL TOWER 128.2 254.25 | GND CON 121.8 | CLNC DEL 135.7 | CPDLC |



| | | | | | |
|----------|---------------------|-------------|---------|--------|-------------|
| CATEGORY | A | B | C | D | E |
| S-ILS 1R | 1217/18 200 (200-½) | | | | |
| S-LOC 1R | 1360/24 | 343 (400-½) | 1360/30 | | 343 (400-¾) |
| CIRCLING | 1540-1 | 513 (600-1) | 1540-1½ | 1580-2 | 553 (600-2) |

| | | | | | |
|-------------------|------|------|------|------|------|
| FAF to MAP 5.7 NM | | | | | |
| Knots | 60 | 90 | 120 | 150 | 180 |
| Min:Sec | 5:42 | 3:48 | 2:51 | 2:17 | 1:54 |

NC-3, 11 JUN 2026 to 09 JUL 2026

NC-3, 11 JUN 2026 to 09 JUL 2026