

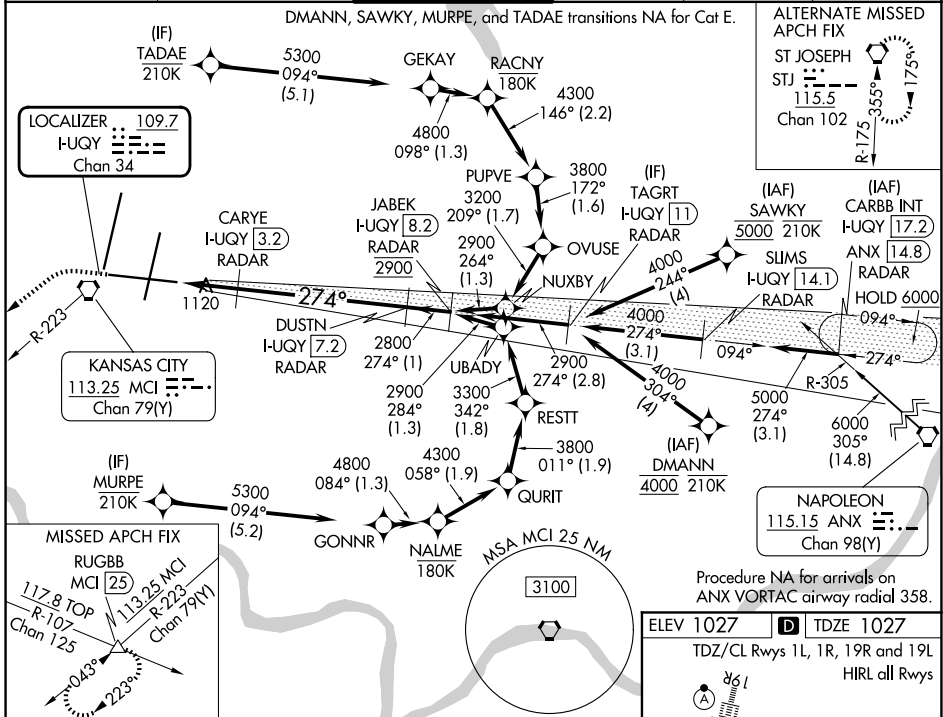
LOC/DME I-QUY 109.7 Chan 34	APP CRS 274°	Rwy Ldg 9501 TDZE 1027 Apt Elev 1027
---	------------------------	---

ILS or LOC RWY 27

KANSAS CITY INTL (MCI)

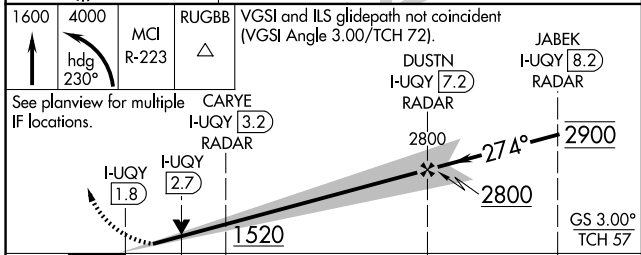
RNP APCH - GPS. From DMANN or SAWKY or MURPE or TADAE. DME or RADAR required.	MALSR 	MISSED APPROACH: Climb to 1600 then climbing left turn to 4000 on heading 230° and MCI R-223 to RUGBB INT/MCI 25 DME and hold.
▼ For inop ALS, increase S-ILS 27 Cat E visibility to RVR 4000 and S-LOC 27 Cat C/D/E visibility to RVR 5500. *RVR 1800 authorized with use of FD or AP or HUD to DA.		

D-ATIS 128.375	KANSAS CITY APP CON 120.95 318.1	INTERNATIONAL TOWER 128.2 254.25	GND CON 121.8	CLNC DEL 135.7	CPDLC
--------------------------	--	--	-------------------------	--------------------------	-------



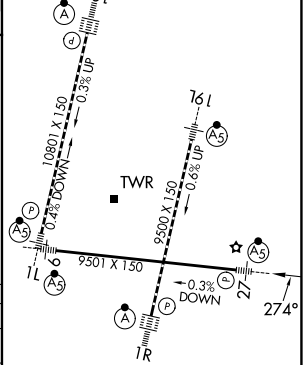
NC-3, 11 JUN 2026 to 09 JUL 2026

NC-3, 11 JUN 2026 to 09 JUL 2026



ELEV 1027	TDZE 1027
-----------	-----------

TDZ/CL Rwy's 1L, 1R, 19R and 19L
HIRL all Rwy's



CATEGORY	A	B	C	D	E
S-ILS 27*	1227/24 200 (200-½)				
S-LOC 27	1380/24	353 (400-½)	1380/30		353 (400-¾)
CIRCLING	1540-1	513 (600-1)	1540-1½	513 (600-1½)	1580-2 553 (600-2)

FAF to MAP 5.4 NM					
Knots	60	90	120	150	180
Min:Sec	5:24	3:36	2:42	2:10	1:48