

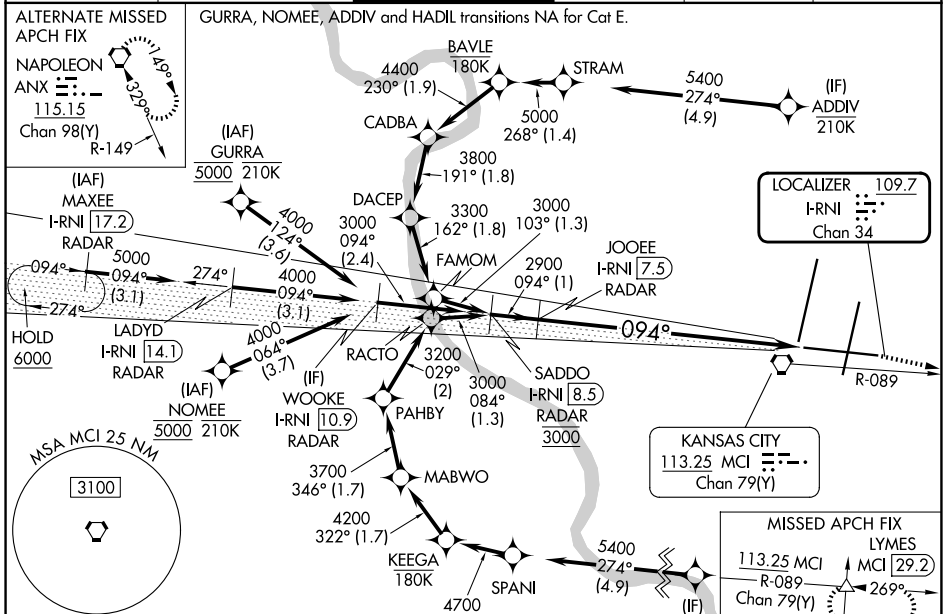
LOC/DME I-RNI 109.7 Chan 34	APP CRS 094°	Rwy Ldg TDZE Apt Elev	9501 1016 1027
---	------------------------	-----------------------------	---

ILS or LOC RWY 9

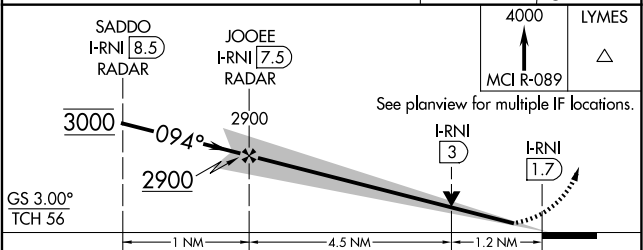
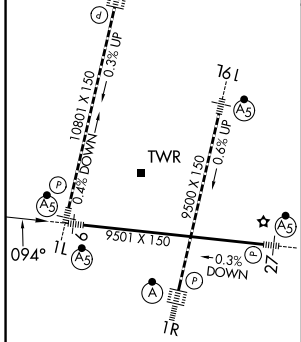
KANSAS CITY INTL (MCI)

RNP APCH-GPS. From GURRA or NOMEIE or ADDIV or HADIL.	MALSR 	MISSED APPROACH: Climb to 4000 on MCI R-089 to LYMES INT/MCI 29.2 DME and hold.
DME or RADAR required. RADAR required for procedure entry at MAXEE.		
<p>▼ Inop table does not apply to S-ILS 9. For inop ALS, increase S-LOC 9 Cats A/B visibility to RVR 5500 and S-LOC 9 Cat E visibility to 1 3/4 SM.</p>		

D-ATIS 128.375	KANSAS CITY APP CON 120.95 318.1	INTERNATIONAL TOWER 128.2 254.25	GND CON 121.8	CLNC DEL 135.7	CPDLC
--------------------------	--	--	-------------------------	--------------------------	-------



ELEV 1027	TDZE 1016
TDZ/CL Rwys 1L, 1R, 19L and 19R HIRL all Rwys	



FAF to MAP 5.7 NM					
Knots	60	90	120	150	180
Min:Sec	5:42	3:48	2:51	2:17	1:54
CATEGORY	A	B	C	D	E
S-ILS 9	1266/40 250 (300-3/4)				
S-LOC 9	1460/40	444 (500-3/4)	1460/45 444 (500-7/8)		
CIRCLING	1540-1	513 (600-1)	1540-1 1/2	1580-2 553 (600-2)	

NC-3, 11 JUN 2026 to 09 JUL 2026

NC-3, 11 JUN 2026 to 09 JUL 2026