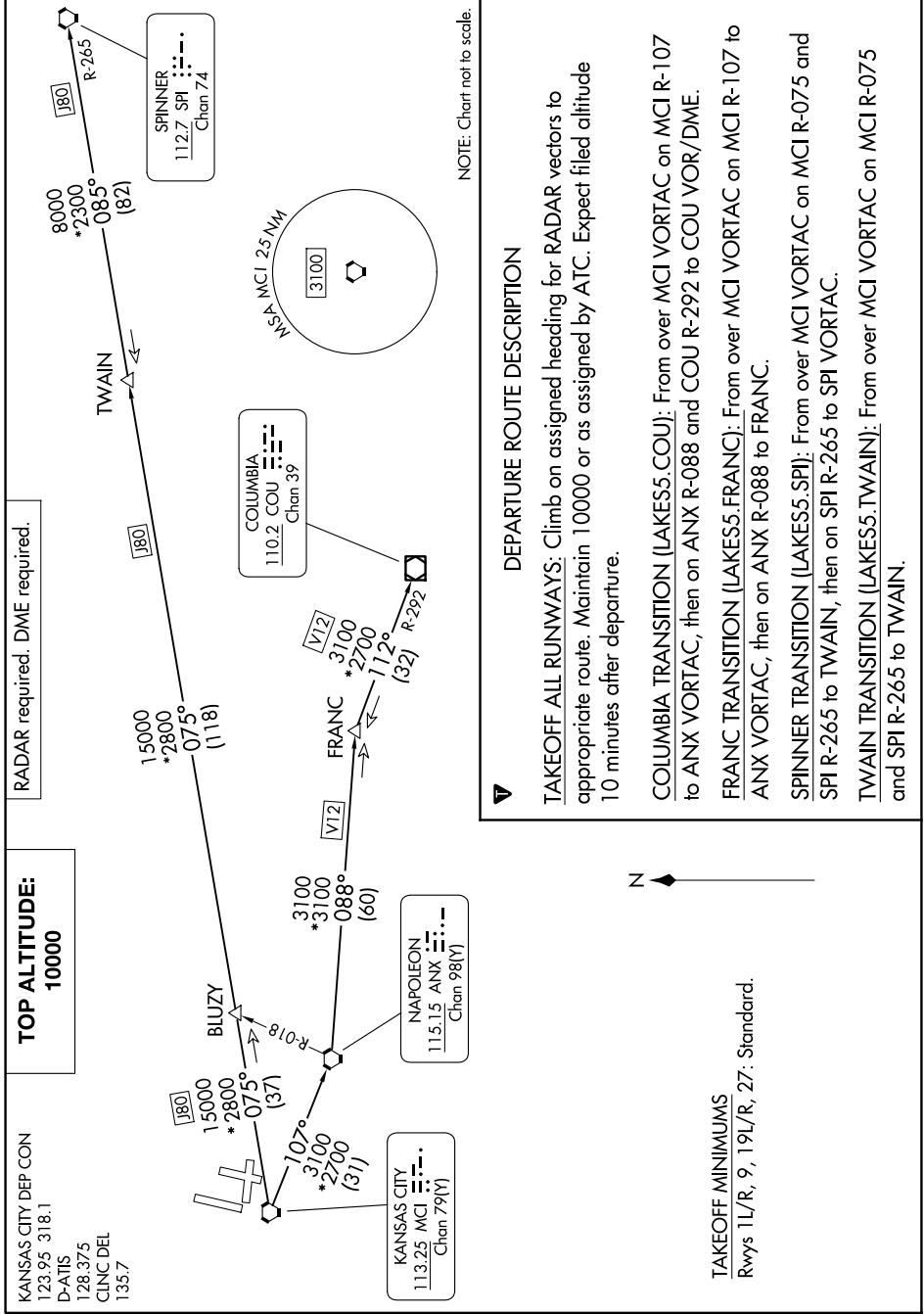


LAKES FIVE DEPARTURE

AL-780 (FAA)

KANSAS CITY INTL (MCI)
KANSAS CITY, MISSOURI

9200 200R 60 01 92002 000R 14 '8-0N



DEPARTURE ROUTE DESCRIPTION

TAKEOFF ALL RUNWAYS: Climb on assigned heading for RADAR vectors to appropriate route. Maintain 10000 or as assigned by ATC. Expect filed altitude 10 minutes after departure.

- COLUMBIA TRANSITION [LAKES5.COU]:** From over MCI VORTAC on MCI R-107 to ANX VORTAC, then on ANX R-088 and COU R-292 to COU VOR/DME.
- FRANC TRANSITION [LAKES5.FRANC]:** From over MCI VORTAC on MCI R-107 to ANX VORTAC, then on ANX R-088 to FRANC.
- SPINNER TRANSITION [LAKES5.SPI]:** From over MCI VORTAC on MCI R-107 to SPI R-265 to TWAIN, then on SPI R-265 to SPI VORTAC.
- TWAIN TRANSITION [LAKES5.TWAIN]:** From over MCI VORTAC on MCI R-075 and SPI R-265 to TWAIN.